



**NOVEMBER 2021**

**Norm Winski**

6457 Autumn Woods Blvd.  
Naples, Florida 34109

**[239] 594-3939**  
**Skype: nwinski\_1**

**[nwinski@embargmail.com](mailto:nwinski@embargmail.com)**

All of the material contained herein is the sole opinion of Norm Winski, the publisher of Astro-Trend Publication. Norm Winski will not be held responsible for accidental oversights, typos, or incorrect information from any sources that generate any of the opinions and comments found in this publication. Futures, Options on futures, and Forex trading carry significant risk, and is not for every investor..Only risk capital should be used. Past performance is not necessarily indicative of future results. Any person who chooses to use this information as a basis for any of their trading assumes all the liability and risk for themselves and hereby and absolutely agrees to indemnify and hold harmless Norm Winski. Risk may be more than the funds deposited in a trading account.

## **NOVEMBER 2021**



### **MARKET WATCH**

This month's letter covers November 1<sup>st</sup> through November 28<sup>th</sup> .

The November major planetary events can be sorted into four segments.

**Editor's Note:** Please assume Stocks are affected by all listed events, unless stated otherwise.

1. A. 10/29 AC – Venus Greatest Elongation East. Major change in trend Cattle, Copper, Cotton, Sugar, Wheat.  
B. 10/29 AC – Pluto 90 US Mercury. Major change in trend US Stocks, T-Bonds, US Dollar.  
C. 10/29 AC – Geo Mars enters Scorpio. Important change in trend Cocoa, Hogs, and T-Bonds.
2. A. 11/04 AC – New Moon in Scorpio. Major change in trend Financials, Grains, Precious Metals and especially Cocoa, Hogs, & T-Bonds.  
B. 11/04 AC – Saturn 135 US Neptune. Moderate change in trend US Stocks, T-Bonds, US Dollar, & Oil.  
C. 11/05 AC – Pluto Contra-Parallel US Sun. Major change in trend US Stocks, T-Bonds, US Dollar.  
D. 11/09 AC - Saturn 180 US North Node. Major change in trend US Stocks, T-Bonds, US Dollar.
3. A. 11/18 AC – Full Moon/Lunar Eclipse in Taurus. Major Change in Trend Financials, Grains, Precious Metals and especially Cattle and Cotton.  
B. 11/19 PM – Uranus 120 US Part of Fortune. Major change in trend US Stocks, T-Bonds, US Dollar.  
C. 11/19 AC – Mercury 0 South Latitude. Major change in trend Corn, Oats, Soybeans, Wheat.
4. A. 11/23 AC – Jupiter 150 US Neptune. Moderate change in trend US Stocks, T-Bonds, US Dollar, & Oil.  
B. 11/26 AC – Jupiter Parallel Latitude US Moon. Major change in trend US Stocks, T-Bonds, US Dollar.  
C. 11/29 AC – Saturn 120 US Uranus. Major change in trend US Stocks, T-Bonds, US Dollar.

**FUTURES AND OPTIONS TRADING IS NOT SUITABLE FOR ALL INVESTORS. THE RISK OF LOSS IS SUBSTANTIAL. AN INVESTOR COULD LOSE MORE THAN THE INITIAL INVESTMENT. PAST PERFORMANCE IS NOT NECESSARILY INDICATIVE FUTURE RESULTS.**

**MAJOR EVENTS**

<u>Date</u>	<u>Events</u>	<u>Markets Effected</u>
10/29 AC	Venus Grt. Elong. E.	Cattle, Copper, Cotton, Sugar, Wheat
10/29 AC	Pluto 180 US Mercury	Stocks, T-Bonds, US \$
10/29 AC	Geo Mars > Scorpio	Cocoa, Hogs, T-Bonds
11/04 AC	New Moon/Scorpio	Financials, Grains, Prec.Metals,
		Cocoa, Hogs, T-Bonds
11/04 AC	Saturn 135 US Neptune	Stocks, T-Bonds, US \$, Oil
11/05 AC	Pluto # US Sun	Stocks, T-Bonds, US \$
11/09 AC	Saturn 180 US N. Node	Stocks, T-Bonds, US \$
11/18 AC	Full Moon-Lunar Ecl./Taurus	Financials, Grains, Precious Metals,
		Cattle, Cotton
11/19 PM	Uranus 120 US PF	Stocks, T-Bonds, US \$
11/19 AC	Mercury 0 South Latitude	Corn, Oats, Soybeans, Wheat
11/23 AM	Jupiter 150 US Mercury	Stocks, T-Bonds, US \$
11/26 AC	Jupiter    Lat. US Moon	Stocks, T-Bonds, US \$
11/29 AC	Saturn 120 US Uranus	Stocks, T-Bonds, US \$

**NOVEMBER 2021 MARKET MONITOR LIST**

The November planetary analysis indicates that the best areas to monitor this month are:

- 1) T-Bonds; 2) Stocks; 3) Oats; 4) Wheat; 5) Soybeans; 6) Corn; 7) US \$; 8) Cocoa & Hogs; 9 tie) Cattle & Cotton; 10) Tokyo Stock Exchange; 11) Oil; 12) C.I./CRB; 13 tie) Gold & OJ; 14) Copper; and 15) Sugar.

**STOCKS**

10/01 SPX CL 4357.04

10/29 SPX CL 4605.38

October Review – “October should be a volatile, wild and swinging month for the Stock Market with five Planetary Polarity Points plus several more major aspects. Following is a summary of the top ten events or windows: 10/05 AC – Jupiter Parallel Latitude Neptune, a New Moon, and Pluto turns Direct; 10/10 AC - Saturn turns Direct; 10/14 AC – Mercury 0 North Latitude; 10/15 AC – Neptune 90 US Mars and Jupiter turns Direct; 10/18 AM – Mercury turns Direct; 10/19 AM – Helio Saturn 90 Uranus; 10/19 AC – Mercury Perihelion and 10/20 AM – Full Moon; 10/22 AC – Mercury Greatest Elongation West and Uranus 90 US MC; 10/29 AC – Venus Greatest Elongation East, Pluto 180 US Mercury & Geo Mars enters Scorpio.

Near term, the Stock Market had a strong down trend for most of September. The rally on 10/1 into our 10/1 AC change in trend window suggest a high for Monday. If that is the case, there should be a decline into our huge 10/5 AC change in trend window. If the market rallies past Monday, then expect a rally high into 10/6.”

Results -

Market Math –

10/6 – 4,597 Music Days from the 3/06/2009 major low.

10/6 was a re-test of the 10/4 low of the month and a very good low. Score – 1 out of 1 = 100%.

Fibonacci – 10/6, 10/15, 10/18, 10/29

10/6 was a re-test of the 10/4 low of the month and a very good low. 10/15 and 10/18 were not effective.

Score – 1 out of 3 good dates = 33.34%

Astro – 10/4, 10/6, 10/11, 10/14, 10/15, 10/20, 10/25, 10/29 AC

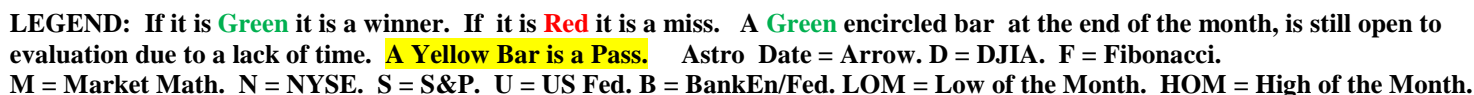
10/4 was the exact low of the month. 10/6 was a re-test of the 10/4 low of the month and a very good low.

10/11 was a pass. 10/14 was a breakout buy over a downtrend. 10/15 and 10/20 were not effective.

10/25 was close in price and one day ahead of a short term high. Score – 4 out of 6 good dates.

Total Score – 6 out of 10 good dates = 60%.

**FUTURES AND OPTIONS TRADING IS NOT SUITABLE FOR ALL INVESTORS. THE RISK OF LOSS IS SUBSTANTIAL. AN INVESTOR COULD LOSE MORE THAN THE INITIAL INVESTMENT. PAST PERFORMANCE IS NOT NECESSARILY INDICATIVE OF FUTURE RESULTS.**



**The top Astro events this month are: 10/29 AC – Venus Greatest Elongation; Pluto 90 US Mercury; and Geo Mars enters Scorpio. 11/04 AC – New Moon in Scorpio. 10/05 – Pluto Contra-Parallel US Sun. 11/09 – Saturn 180 US North Node. 11/18 AC – Lunar Eclipse in Taurus. 11/19 PM – Uranus 120 US Part of Fortune. 11/19 AC – Mercury 0 South Latitude. 11/26 AC – Jupiter Parallel Latitude US Moon. 11/29 – Saturn 120 US Uranus.**

11/02 – 4,624 Days ( $68^{\wedge}2$ ) from the 3/06/2009 major low.  
 11/29 – 5,161 Music Days from the major 10/11/2007 high.  
 11/30 – 7,921 ( $89^{\wedge}2$ ) from the major 3/24/2000 high.

**Astro – 11/1, 11/5, 11/10, 11/17, 11/19, 11/22, 11/26**

**FUTURES AND OPTIONS TRADING IS NOT SUITABLE FOR ALL INVESTORS. THE RISK OF LOSS IS SUBSTANTIAL. AN INVESTOR COULD LOSE MORE THAN THE INITIAL INVESTMENT. PAST PERFORMANCE IS NOT NECESSARILY INDICATIVE OF FUTURE RESULTS.**

T-BONDS

10/01 ZB Z21 CL 160-14

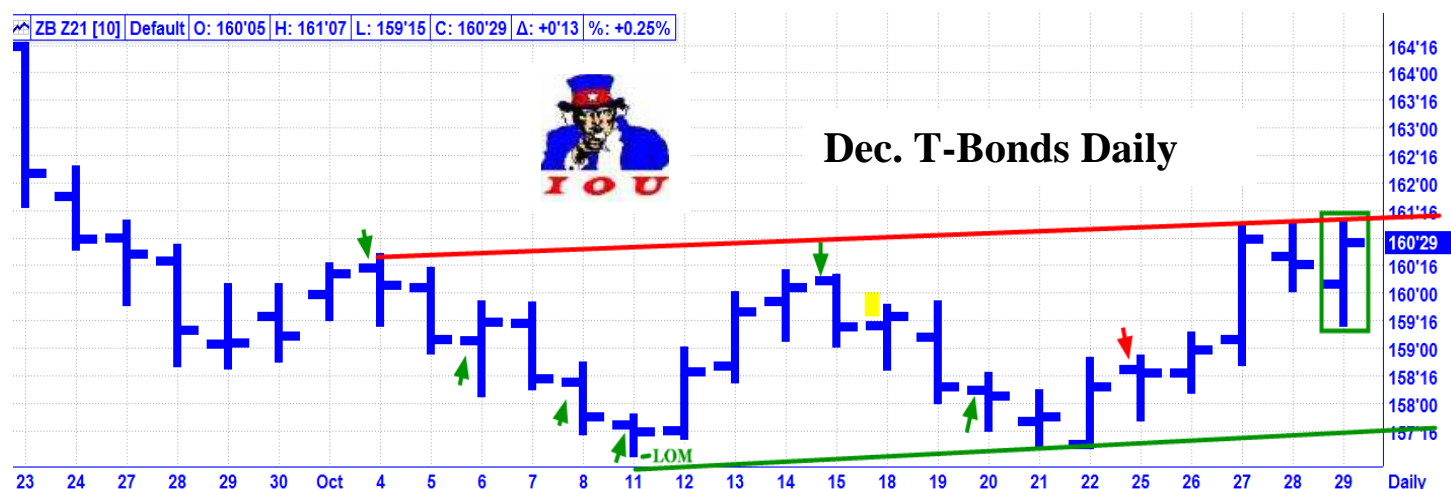
10/29 ZB Z21 CL 160-29

**October Review** – “T-Bonds had a sharp decline in the third week of September and then a small bounce into the 10/1 weekend. The top Astro events for T-Bonds this month are: 10/5 AC – Pluto turns Direct. Pluto is a planetary ruler for Bonds; 10/15 AC – Neptune 90 US Mars; 10/22 AC – Uranus 90 US MC; and Geo Mars enters Scorpio. The US chart is a major factor for T-Bonds. Scorpio is the ruling sign for Bonds. Key Dates – 10/4, 10/6, 10/8, 10/11, 10/15, 10/18, 10/20, 10/25, 10/29 AC”

**Results** – 10/4 was a very good high. 10/6 was a one day low. 10/8 was close in price and one day ahead of the low of the month. 10/11 was the exact low of the month. 10/15 was very close in price and one day past a good high. 10/18 was a pass. 10/20 was close in price and one day ahead of a very good low. 10/25 was not effective. Score – 6 out of 7 good dates = 85.71%.

**November Update** – T-Bonds traded in a wide sideways trading range for most of October and are now at the top of that range. Our Astro radar via the Monitor List indicates that T-Bonds is the top market to watch in November. The top Astro events for T-Bonds this month are: 10/29 – Pluto 180 US Mercury and Geo Mars enters Scorpio; 11/04 – New Moon is Scorpio; 11/05 AC – Pluto Contra-Parallel US Sun; 11/09 AC – Saturn 180 US North Node; 11/18 AC – New Moon; 11/19 PM – Uranus 120 US Part of Fortune; 11/26 AC – Jupiter Parallel Latitude US Moon. T-Bonds have been following our Fractal Model fairly well. If this pattern continues, T-Bonds should continue to move gradually higher into December.

**Key Dates** – 11/1, 11/5, 11/8, 11/17, 11/19, 11/22, 11/23, 11/26

US DOLLAR

10/01 DX Z21 CL 94.095

10/29 DX Z21 CL 94.120

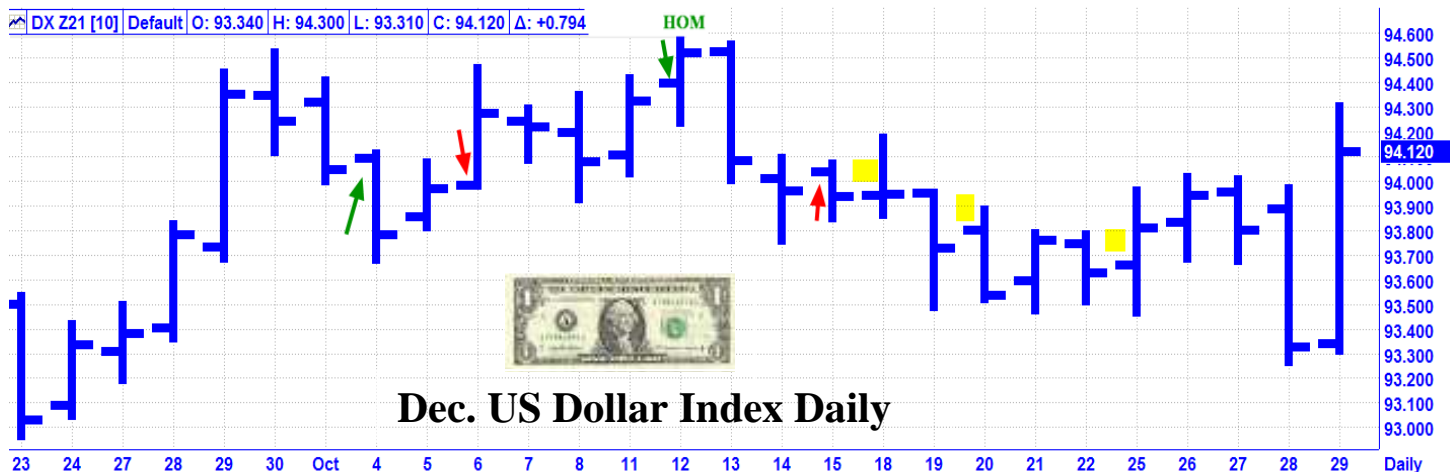
**October Review** – “The US Dollar Index had a good uptrend for most of September. The top Astro events for the US Dollar are 10/6 – New Moon; 10/15 AC – Neptune 90 US Mars; 10/20 – Full Moon; and 10/22 AC – Uranus 90 US MC. The lunar cycle and the US chart are major factors for the US Dollar. Key Dates – 10/4, 10/6, 10/12, 10/15, 10/18, 10/20, 10/25”

**Results** – 10/4 was a good low. 10/6 was not effective. 10/12 was the exact high of the month. 10/15 was not effective. 10/18, 10/20, and 10/25 were passes. Score – 2 out of 4 good dates = 50%.

**November Update** – The US Dollar Index had a zig zag rally into mid month and then a zig zag decline into the end of the month with a huge up day on the last day of the month. The top Astro dates for the US Dollar are: 10/29 – Pluto 180 US Mercury; 11/04 – New Moon is Scorpio; 11/05 AC – Pluto Contra-Parallel US Sun; 11/09 AC – Saturn 180 US North Node; 11/18 AC – New Moon; 11/19 PM – Uranus 120 US Part of Fortune; 11/26 AC – Jupiter Parallel Latitude US Moon.

**Key Dates** – 11/5, 11/8, 11/19, 11/22, 11/23

FUTURES AND OPTIONS TRADING IS NOT SUITABLE FOR ALL INVESTORS. THE RISK OF LOSS IS SUBSTANTIAL. AN INVESTOR COULD LOSE MORE THAN THE INITIAL INVESTMENT. PAST PERFORMANCE IS NOT NECESSARILY INDICATIVE OF FUTURE RESULTS.



**TOKYO STOCK EXCHANGE**  
**NIKKEI 225**

10/01 NIK CL 28,771.07

10/29 NIK CL 28,892.69

November New – The Tokyo Stock Exchange has popped up on our Astro radar. We will use the Nikkei 225 Stock Market Index to monitor our results. Please see the chart below. The Nikkei had a good rally into the third week of October and then traded sideways into the end of the month.

Key Dates – 11/15, 11/22, 11/26 AC



**COMMODITY INDEX - CRB**

10/01 CRB CL 230.38

10/29 CRB CL 237.70

October Review – “The CRB had a strong move up for most of September. This reflects the current trend for inflation. The top three Astro events for October are: 10/5 AC – Jupiter Parallel Latitude Neptune and a New Moon; and 10/20 AC Full Moon. Key Dates – 10/6, 10/14, 10/20, 10/28”

Results – 10/6 was a pullback low. 10/14 was a pass. 10/20 was a short term high. Score – 2 out 2 good dates = 100%.

November Update – The CRB had a good rally into mid month and then began to lose its upside momentum. Perhaps this is an indication that inflation may be slowing? Stay Tuned!

Key Dates – 11/1, 11/5, 11/15, 11/20, 11/26

FUTURES AND OPTIONS TRADING IS NOT SUITABLE FOR ALL INVESTORS. THE RISK OF LOSS IS SUBSTANTIAL. AN INVESTOR COULD LOSE MORE THAN THE INITIAL INVESTMENT. PAST PERFORMANCE IS NOT NECESSARILY INDICATIVE OF FUTURE RESULTS.



## CRUDE OIL

**10/01 CL F22 CL 75.12**

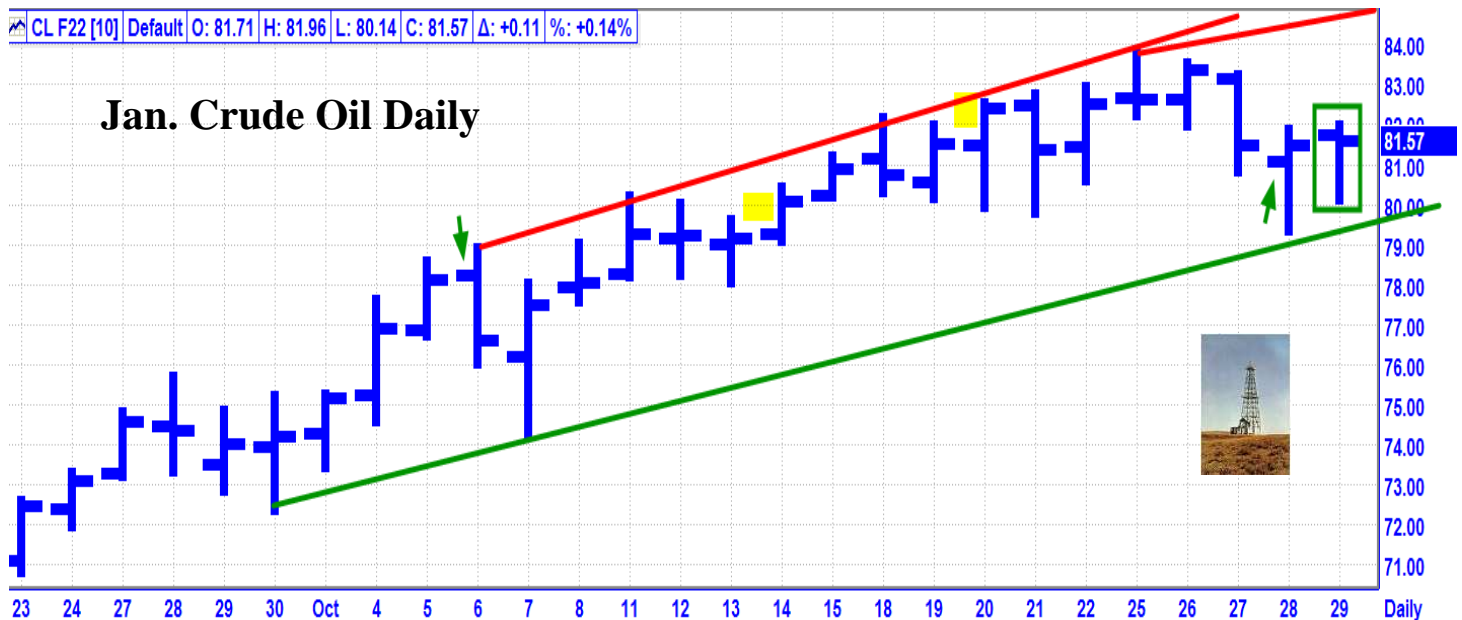
**10/29 CL F22 CL 81.57**

**October Review – “Crude Oil had a steady and strong up trend for most of September. The top three Astro events for October are: 10/5 AC – Jupiter Parallel Latitude Neptune and a New Moon and 10/20 AC Full Moon. Key Dates – 10/6, 10/14, 10/20, 10/28, 10/29 AC”**

**Results – 10/6 was a good short term high. 10/14 and 10/20 were passes. 10/28 was a low. Score – 2 out of 2 good dates = 100%.**

**November Update – Crude Oil rallied for almost all of October into a seven year high and pulled back into the bottom of its trading channel at the end of the month. The top Astro events for Oil this month are: 11/04 AC – New Moon & Saturn 135 US Neptune; and 11/18 AC – Lunar Eclipse.**

**Key Dates – 11/1, 11/5, 11/15, 11/19, 11/26 AC**



**FUTURES AND OPTIONS TRADING IS NOT SUITABLE FOR ALL INVESTORS. THE RISK OF LOSS IS SUBSTANTIAL. AN INVESTOR COULD LOSE MORE THAN THE INITIAL INVESTMENT. PAST PERFORMANCE IS NOT NECESSARILY INDICATIVE OF FUTURE RESULTS.**



COPPER

10/01 HG Z21 CL 4.2085

10/29 HG Z21 CL 4.3740

**October Review** – “During the past month, Copper traded in a wide trading range with a downward bias into the end of the month. The top Astro events for Copper this month are : 10/5 AC – Jupiter in Aquarius Parallel Latitude Neptune; 10/10 AC – Saturn in Aquarius turns Direct; 10/15 AC – Jupiter in Aquarius turns Direct; 10/19 AM – Helio Saturn 90 Uranus; and 10/29 AC – Venus Greatest Elongation East. Aquarius is the ruling sign for Copper. Uranus and Venus are Copper’s co-ruling planets. Key Date – 10/6, 10/11, 10/14, 10/18-19, 10/29 AC”

**Results** – 10/6 was a very good low. 10/11 and 10/14 were not effective. 10/18 was the exact high of the month. 10/19 was very close in price and one day past the high of the month. Score – 3 out of 5 good dates = 60%.

**November Update** – Copper had a strong rally into mid month and then turned lower for the rest of October. The top Astro event for Copper is 10/29 AC – Venus Greatest Elongation. Venus is the co-ruling planet for Copper.

**Key Date** – 11/1, 11/3, 11/5, 11/15, 11/17, 11/22

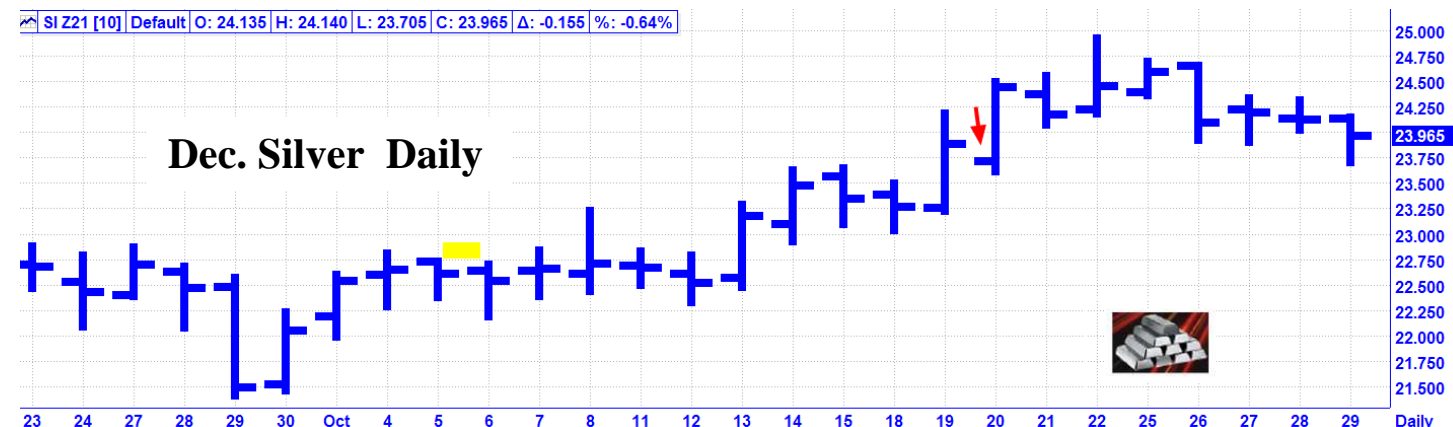
SILVER

10/01 SI Z21 CL 22.555

10/29 SI Z21 CL 23.965

**October Review Only** – “Silver made a high near the New Moon in early September. From there, it was down sharply for most of the month. Silver has now rallied to the top of its trading channel. However, there is a New Moon coming on 10/5 AC. Will this be a high or a low for Silver? Stay tuned Silver fans. Key Dates – 10/6, 10/20”

**Results** – 10/6 was a pass. 10/20 was not effective. Score = 0 out of 1 good dates = 0%.



**FUTURES AND OPTIONS TRADING IS NOT SUITABLE FOR ALL INVESTORS. THE RISK OF LOSS IS SUBSTANTIAL. AN INVESTOR COULD LOSE MORE THAN THE INITIAL INVESTMENT. PAST PERFORMANCE IS NOT NECESSARILY INDICATIVE OF FUTURE RESULTS.**



**GOLD**

10/01 GC Z21 CL 1761.30

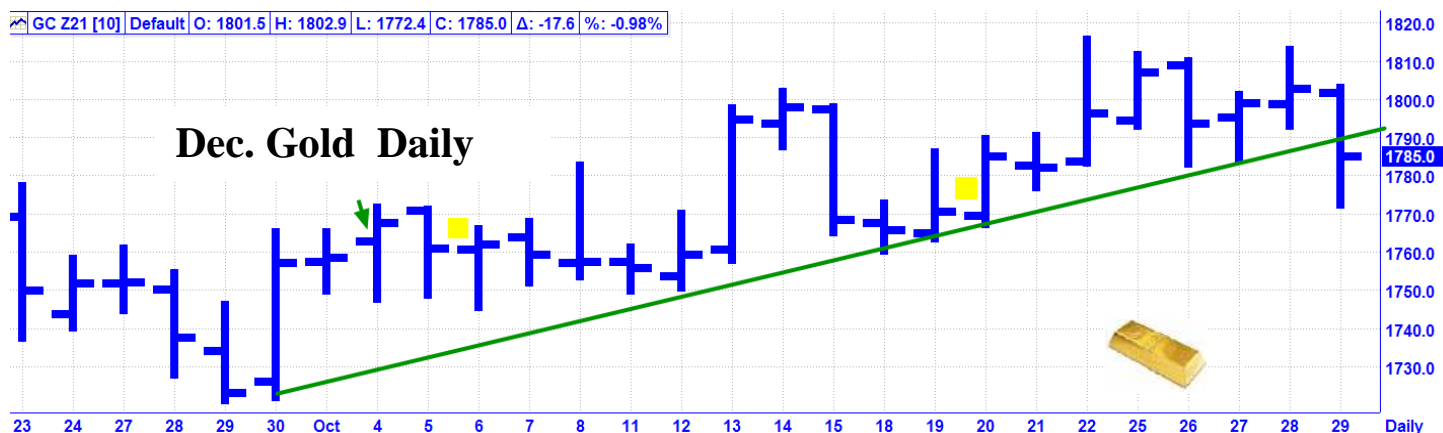
10/29 GC Z21 CL 1785.00

**October Review** – “Gold made a high near the New Moon in early September. From there, it was down sharply for most of the month. Gold has now rallied to the top of its trading channel. However, there is a change in trend due on 10/4 and a New Moon coming on 10/5 AC. Stay tuned! Key Dates – 10/4, 10/6, 10/20”

**Results** – 10/4 was a short term high. 10/6 and 10/20 were passes. Score – 1 out of 1 good dates = 100%.

**November Update** – Gold had a modest uptrend for most of October. However, on 10/29, it looks like it broke its uptrend line. The top Astro events for Gold this month are: 11/04 AC – New Moon and 11/18 AC – Lunar Eclipse.

**Key Dates** – 11/5, 11/19

**OJ**

10/01 JO F22 CL 136.60

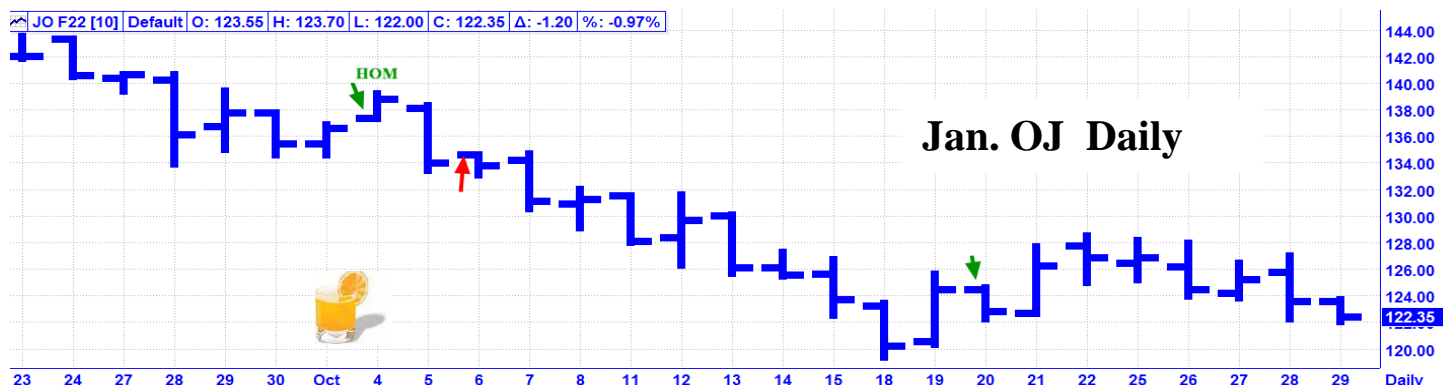
10/29 JO F22 CL 122.35

**October Review** – “OJ traded in a wide trading range into mid-month and turned lower into the end of September. This market seems to be basing for a low. There is a change in trend due on 10/4 and a New Moon coming on 10/5 AC. Stay tuned! Key Dates – 10/4, 10/6, 10/20”

**Results** – 10/4 was the exact high of the month. 10/6 was not effective. 10/20 was a one day high. Score – 2 out of 3 good dates = 66.67%.

**November Update** – OJ had a strong down trend into the third week of October and then traded into a consolidation pattern, ending with weakness into the end of the month. The top Astro events for OJ this month are: 11/04 AC – New Moon and 11/18 AC – Lunar Eclipse.

**Key Dates** – 11/5, 11/19



**FUTURES AND OPTIONS TRADING IS NOT SUITABLE FOR ALL INVESTORS. THE RISK OF LOSS IS SUBSTANTIAL. AN INVESTOR COULD LOSE MORE THAN THE INITIAL INVESTMENT. PAST PERFORMANCE IS NOT NECESSARILY INDICATIVE OF FUTURE RESULTS.**

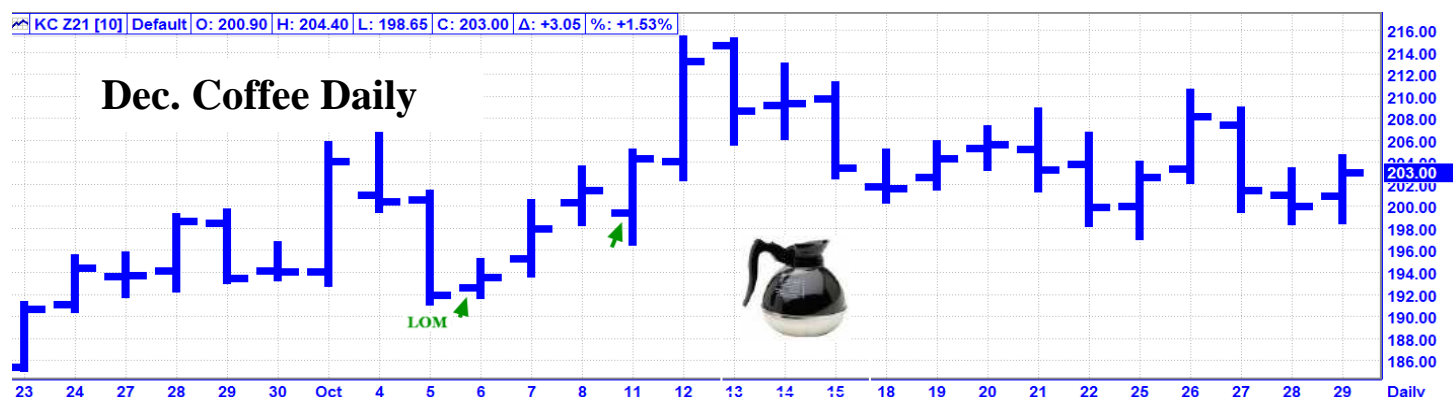
COFFEE

10/01 KC Z21 CL 203.35

10/29 KC Z21 CL 203.00

October Review Only - "Coffee is in a multi month strong up trend. Following a pullback into 9/20, it had a strong rally into the end of the month and is now at multi year highs. There are two major Astro events in October. 10/5 AC – Pluto in Capricorn turns Direct and 10/10 – Saturn turns direct. Capricorn is the ruling sign and Saturn is the ruling planet for Coffee. Key Dates – 10/6, 10/11"

Results – 10/6 was very close in price and one day past the low of the month. 10/11 was a very good pullback low. Score – 2 out of 2 good dates = 100%.

CATTLE

10/01 LE Z21 CL 125.225

10/29 LE Z21 CL 129.300

October Review – "During the past month, Cattle was in a strong down trend. The latter part of the month, the downside momentum slowed somewhat. The two top Astro events for Cattle this month are:

10/1 AC – Venus Aphelion and 10/29 AC – Venus Greatest Elongation East. Venus is the ruling planet for Cattle.

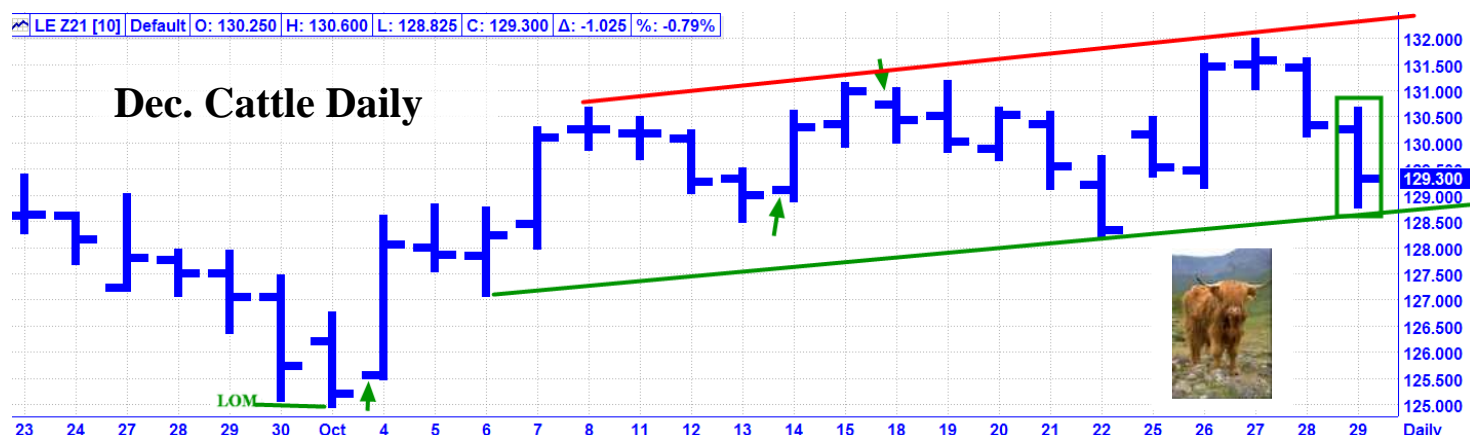
There is a good chance for a low on Monday, October 4<sup>th</sup> with Venus at Aphelion.

Key Dates – 10/4, 10/14, 10/18, 10/29 AC"

Results – 10/4 was very close in price and one day past the low, which was technically in the last day of the previous month, per our publishing schedule. 10/14 was very close in price and one day past a good low. 10/18 was very close in price and one day past a very good high. Score – 3 out of 3 good dates = 100%.

November Update – Cattle had a zig zag uptrend for most of October and has now pulled back to the bottom of its trading channel. The top Astro events for Cattle this month are: 10/29 AC – Venus Greatest Elongation and 11/18 AC – Lunar Eclipse in Taurus. Venus is the ruling planet and Taurus the Bull is the ruling sign for Cattle. Given the 10/29 AC change in trend with Venus at Greatest Elongation, there is a good chance this will be a low.

Key Dates – 11/1, 11/3, 11/5, 11/19



FUTURES AND OPTIONS TRADING IS NOT SUITABLE FOR ALL INVESTORS. THE RISK OF LOSS IS SUBSTANTIAL. AN INVESTOR COULD LOSE MORE THAN THE INITIAL INVESTMENT. PAST PERFORMANCE IS NOT NECESSARILY INDICATIVE OF FUTURE RESULTS.

COTTON

10/01 CT Z21 CL 104.53

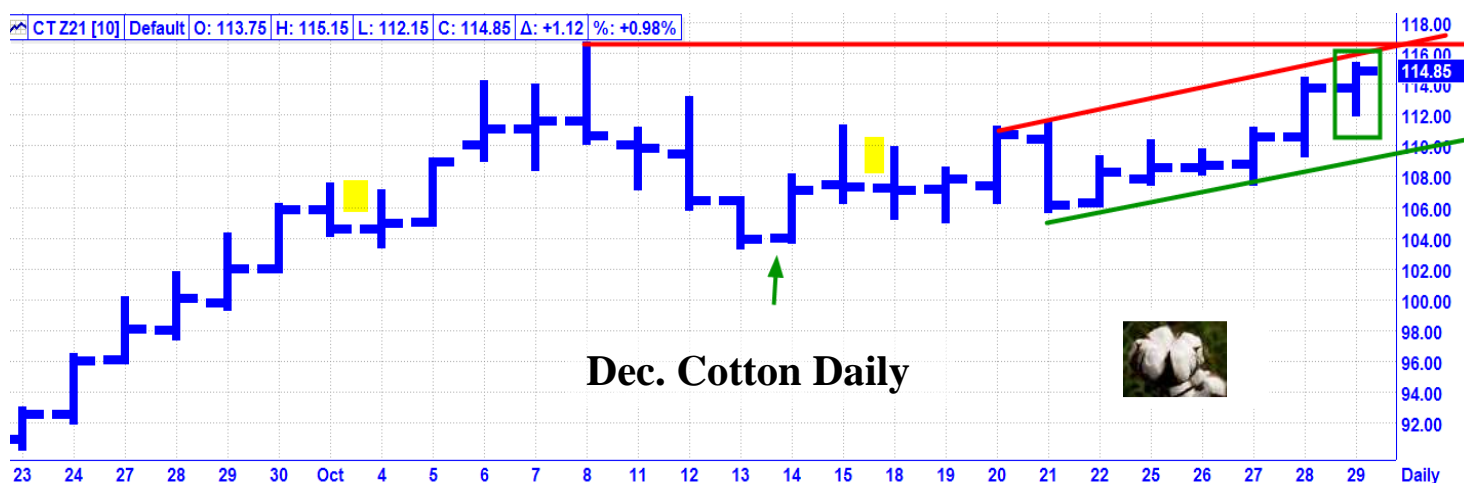
10/29 CT Z21 CL 114.85

**October Review** – “Cotton traded slightly lower into 9/20 and then took off like a rocket to the upside. The two top Astro events for Cotton this month are: 10/1 AC – Venus Aphelion and 10/29 AC – Venus Greatest Elongation East. Venus is the ruling planet for Cotton. There is a good chance for a high on Monday, October 4<sup>th</sup> with Venus at Aphelion. Key Dates – 10/4, 10/14, 10/18, 10/29 AC”

**Results** – 10/4 and 10/18 were passes. 1014 was a low. Score – 1 out of 1 good dates = 100%

**November Update** – Cotton rallied strongly into 10/8, reaching multi-year high prices. Following a pullback into 10/13, Cotton gradually recovered to approach the 10/8 high and the top of its trading channel. Given our 10/29 AC change in trend window, there is a good chance this will be a high. The top Astro events for Cotton this month are: 10/29 AC – Venus Greatest Elongation and 11/18 AC – Full Moon Lunar Eclipse in Taurus. Venus is the ruling planet and Taurus the Bull is the ruling sign for Cotton.

**Key Dates** – 11/1, 11/3, 11/5, 11/19

GRAINS

The historical short term key to the grains, especially Corn and Soybeans, has been a combination of the lunar cycle and the movements of Mercury. These markets tend to make short term reversals on New Moons and Full Moons. Historically, Full Moons have been lows and New Moons have usually been highs. However, recently this pattern has been inverted. Mercury turns retrograde approximately every 120 days, for a period of about 21 days. Grains tend to make highs at Mercury Retrograde and lows when it turns Direct. Previously, Mercury turned Retrograde in Libra, 9/24 AC and turned Direct 10/18 AM.

An ideal lunar cycle setup is when a market has a sizeable move into a Full Moon or a New Moon. Recently, Grains have been responding to the monthly solar ingress, which is the day the Sun changes signs.

**October Key Dates:**

10/29 AC – Venus Greatest Elongation East – WHEAT.

11/04 AC – New Moon in Scorpio. Corn, Oats, Soybeans, Wheat.

11/18 AC – Full Moon – Lunar Eclipse in Taurus - Corn, Oats, Soybeans, Wheat.

11/19 AC – Mercury 0 South Latitude - Corn, Oats, Soybeans, Wheat.

**FUTURES AND OPTIONS TRADING IS NOT SUITABLE FOR ALL INVESTORS. THE RISK OF LOSS IS SUBSTANTIAL. AN INVESTOR COULD LOSE MORE THAN THE INITIAL INVESTMENT. PAST PERFORMANCE IS NOT NECESSARILY INDICATIVE OF FUTURE RESULTS.**

CORN

10/01 ZC Z21 CL 5420

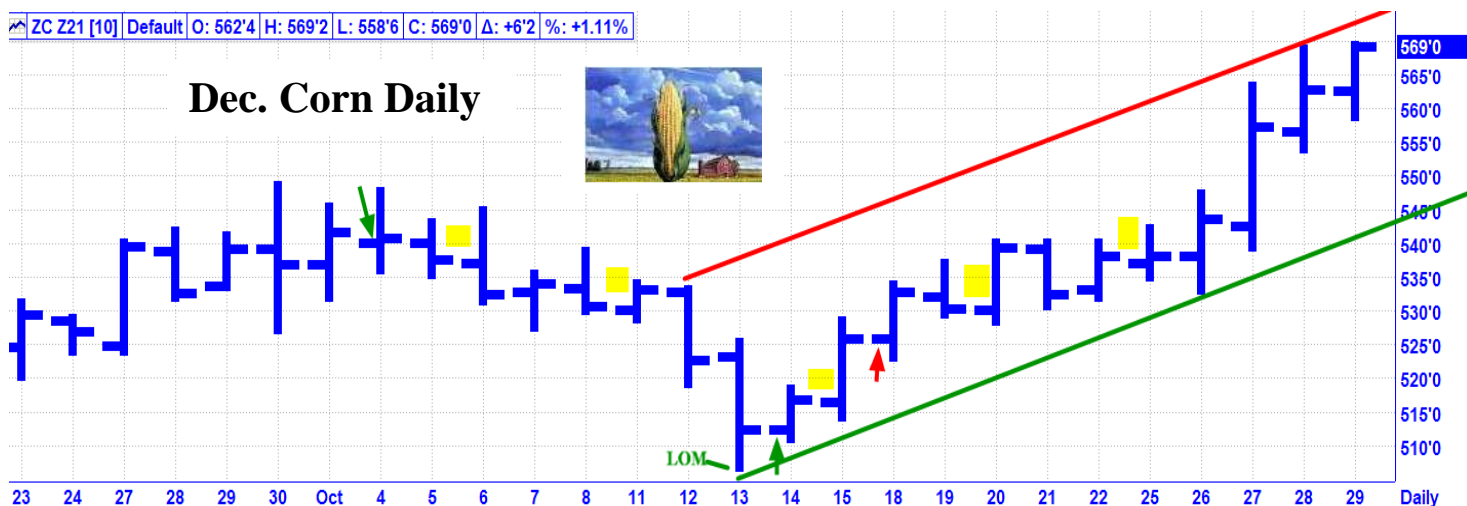
10/29 ZC Z21 CL 5690

**October Review** – “Corn had a strong down trend into 9/10 and then a strong up trend into the end of the month. The top Astro events for Corn this month are: 10/01AC – Venus Aphelion; 10/05 AC - New Moon; 10/14 AC – Mercury 0 North Latitude; 10/18 AM – Mercury turns Direct; 10/19 AC – Mercury Perihelion; 10/20 AM – Full Moon; and 10/22 AC – Mercury Greatest Elongation West. The Sun and Mercury are the co-ruling planets for Corn. Key Dates – 10/4, 10/6, 10/11, 10/14, 10/15, 10/18, 10/20, 10/25”

**Results** – 10/4 was a very good high. 10/14 was very close in price and one day past the low of the month. 10/18 was not effective. All the other dates were passes. Score – 2 out of 3 good dates = 66.67%.

**November Update** – Following a sharp decline into a 10/13 low, Corn had a strong rally for the rest of October, to rally into the top of its trading channel. The top Astro events for Corn this month are: 11/04 AC – New Moon in Scorpio; 11/18 AC – Full Moon Lunar Eclipse in Taurus; and 11/19 AC – Mercury 0 South Latitude.

**Key Dates** – 11/5, 11/15, 11/19, 11/22, 11/26, 11/26 AC

OATS

10/01 ZO Z21 CL 5934

10/29 ZO Z21 CL 7332

**October Review** – “During September, Oats had a small decline into 9/10 and then had a strong rally in the end of the month. The top Astro events for Oats are: 10/05 AC – Jupiter Parallel Latitude Neptune and a New Moon; 10/14 AC – Mercury 0 North Latitude; 10/15 AC – Jupiter Direct; 10/18 AM – Mercury turns Direct; 10/19 AC – Mercury Perihelion; 10/20 AM – Full Moon; and 10/22 AC – Mercury Greatest Elongation West. Key Dates – 10/6, 10/11, 10/14, 10/18, 10/20”

**Results** – 10/6 and 10/20 were passes. 10/11 was close in price and one day ahead of a good high. 10/14 was very close in price and one day past a very good low. 10/18 was a short term high. Score – 3 out of 3 good dates = 100%.

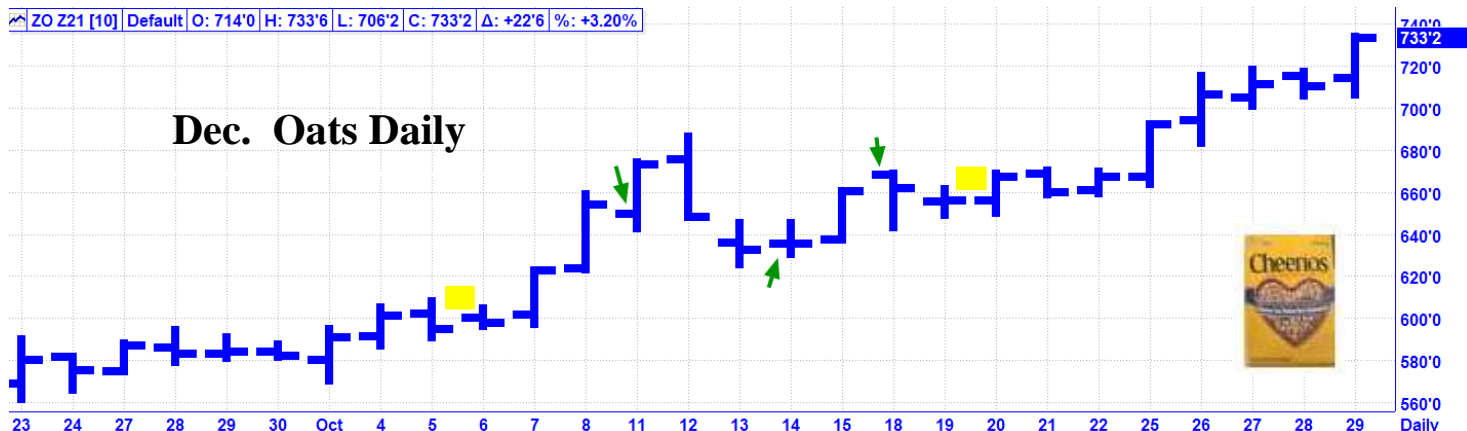
**November Update** – You might call Oats the Moonshot market of the month with a strong uptrend for most of October. This rally has taken Oats to new all-time high prices. Prices are so high, the two horses in Wyoming who trade Oats, had to apply for government assistance. LOL What will stop this rally? Stay tuned! The top Astro events for Oats in November are: 11/04 AC – New Moon in Scorpio; 11/18 AC – Full Moon Lunar Eclipse in Taurus; and 11/19 AC – Mercury 0 South Latitude.

**Key Dates** – 11/5, 11/15, 11/19, 11/22, 11/26, 11/26 AC

FUTURES AND OPTIONS TRADING IS NOT SUITABLE FOR ALL INVESTORS. THE RISK OF LOSS IS SUBSTANTIAL. AN INVESTOR COULD LOSE MORE THAN THE INITIAL INVESTMENT. PAST PERFORMANCE IS NOT NECESSARILY INDICATIVE OF FUTURE RESULTS.

ZO Z21 [10] Default O: 714'0 H: 733'6 L: 706'2 C: 733'2 Δ: +22'6 %: +3.20%

## Dec. Oats Daily



## SOYBEANS

10/01 ZS X21 12644

10/29 ZS H22 12596

**October Review** – “Soybeans had a gradual and steady down trend for most of September. The top Astro events for Soybeans in October are: 10/05 AC - New Moon; 10/14 AC – Mercury 0 North Latitude; 10/18 AM – Mercury turns Direct; 10/19 AC – Mercury Perihelion; 10/20 AM – Full Moon; and 10/22 AC – Mercury Greatest Elongation West. Key Dates – 10/6, 10/11, 10/12, 10/14, 10/15, 10/18, 10/20”

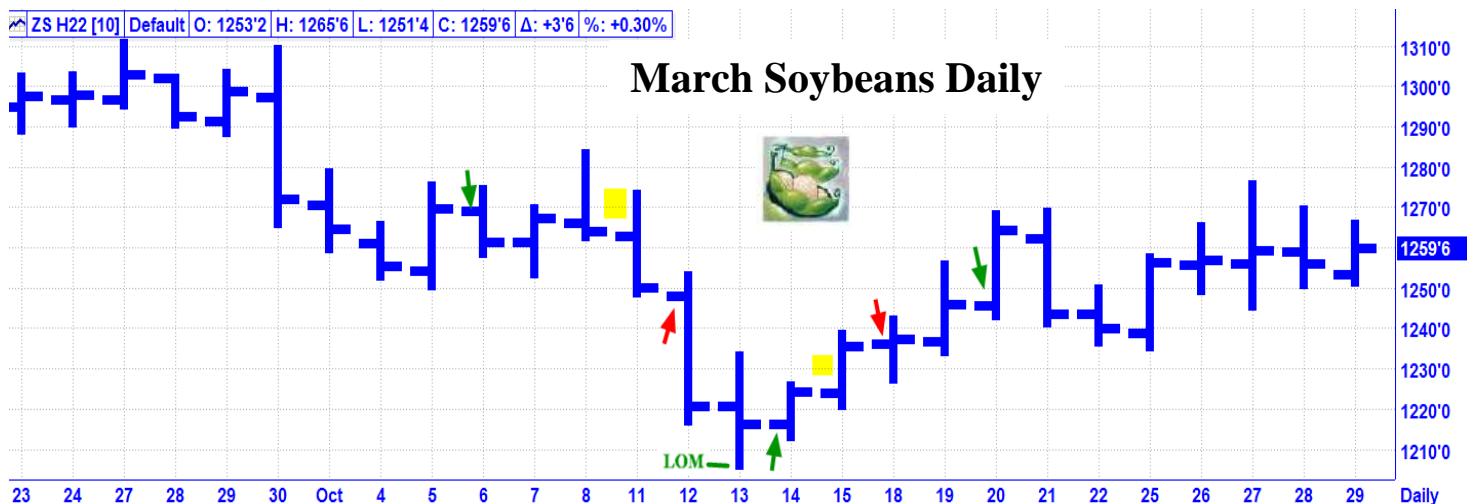
**Results** – 10/12 and 10/18 were not effective. 10/11 and 10/15 were passes. 10/6 was very close in price and one day past a short term high. 10/14 was very close in price and one day past the low of the month. 10/20 was close in price and one day ahead of a short term high. Score – 3 out of 5 good dates = 60%.

**November Update** – Soybeans had a strong decline into a 10/13 low of the month. From that low, Soybeans recovered about half way into the third week and then traded sideways into the end of the month. The top Astro events for Soybeans for November are: 11/04 AC – New Moon in Scorpio; 11/18 AC – Full Moon Lunar Eclipse in Taurus; and 11/19 AC – Mercury 0 South Latitude.

**Key Dates** – 11/5, 11/15, 11/19, 11/22, 11/26, 11/26 AC

ZS H22 [10] Default O: 1253'2 H: 1265'6 L: 1251'4 C: 1259'6 Δ: +3'6 %: +0.30%

## March Soybeans Daily



**FUTURES AND OPTIONS TRADING IS NOT SUITABLE FOR ALL INVESTORS. THE RISK OF LOSS IS SUBSTANTIAL. AN INVESTOR COULD LOSE MORE THAN THE INITIAL INVESTMENT. PAST PERFORMANCE IS NOT NECESSARILY INDICATIVE OF FUTURE RESULTS.**

Please see Wheat in the Martian Market Review section, later in this letter.

## MARTIAN MARKETS OF THE MONTH REVIEW

**9/03 AC – Helio Mars entered Libra. Libra is the ruling sign for Sugar and co-ruler for Wheat. Secondly, Libra is harmonically related to: Capricorn – Coffee; Aquarius – Copper; & Cancer – Silver.**

**9/14 AC – Geo Mars entered Libra. Libra is the ruling sign for Sugar and co-ruler for Wheat. Secondly, Libra is harmonically related to: Capricorn – Coffee; Aquarius – Copper; & Cancer – Silver.**

### WHEAT

10/01 ZW Z21 CL 7576

10/29 ZW Z21 CL 7730

**October Review – “During September, Wheat declined into mid-month and then had a good up trend into the end of the month. 10/1 Wheat broke out to the upside of its trading channel. However, with the Venus Aphelion change in trend over the 10/1 weekend, that may be a fake out break out. The top Astro events for Wheat in October are:**

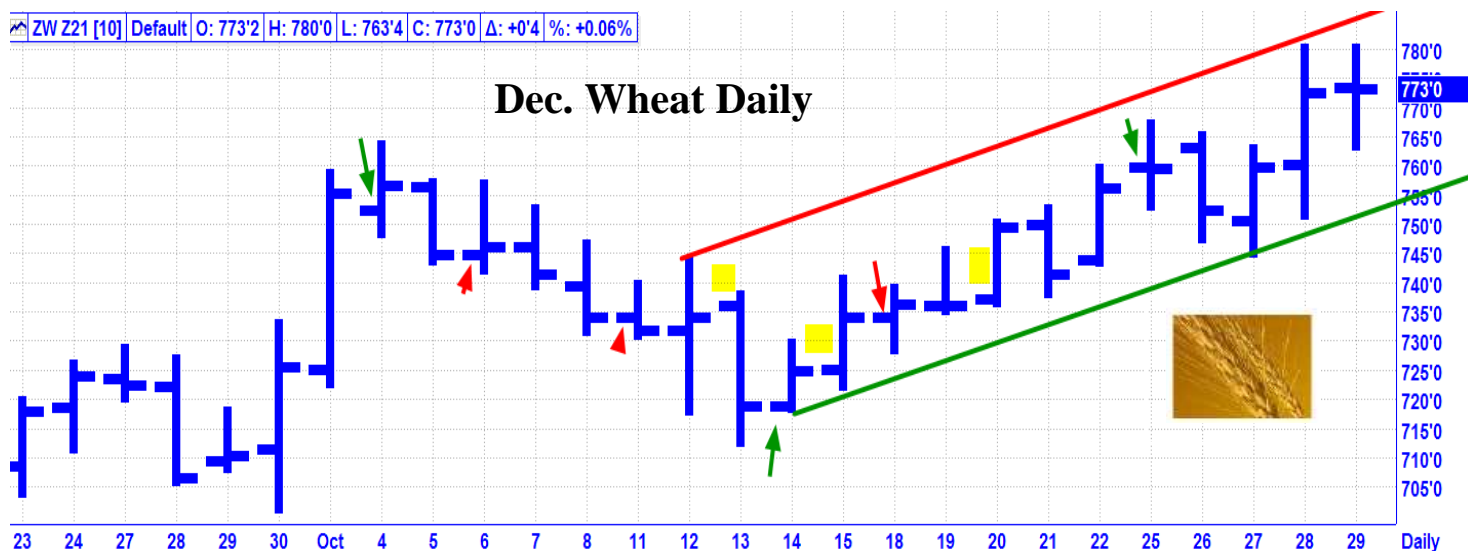
**10/01AC – Venus Aphelion; 10/05 AC - New Moon in Libra; 10/14 AC – Mercury 0 North Latitude; 10/18 AM – Mercury in Libra turns Direct; 10/19 AC – Mercury Perihelion; 10/20 AM – Full Moon in Aries; 10/22 AC – Mercury Greatest Elongation West; and 10/29 AC – Venus Greatest Elongation East.**

**Key Dates – 10/4, 10/6, 10/11, 10/13, 10/14, 10/15, \*10/18\*, 10/20, 10/25, 10/29 AC”**

**Results – 10/6, 10/11, and 10/18 were not effective. 10/13, 10/15, and 10/20 were passes. 10/4 was a very good high. 10/14 was very close in price and one day past the low of the month. 10/25 was a good short term high. Score – 3 out of 6 good dates = 50%**

**November Update – Wheat made a sharp rally peak on 10/4, then a decline into a 10/13 low, and then had a strong rally to new highs into the end of the month. The top Astro events for Wheat in November are: 10/29 AC – Venus Greatest Elongation East; 11/04 AC – New Moon in Scorpio; 11/18 AC – Full Moon Lunar Eclipse in Taurus; and 11/19 AC – Mercury 0 South Latitude.**

**Key Dates – 11/1, 11/5, 11/15, 11/19, 11/22, 11/26**



**FUTURES AND OPTIONS TRADING IS NOT SUITABLE FOR ALL INVESTORS. THE RISK OF LOSS IS SUBSTANTIAL. AN INVESTOR COULD LOSE MORE THAN THE INITIAL INVESTMENT. PAST PERFORMANCE IS NOT NECESSARILY INDICATIVE OF FUTURE RESULTS.**



SUGAR

10/01 SB HV22 CL 20.06

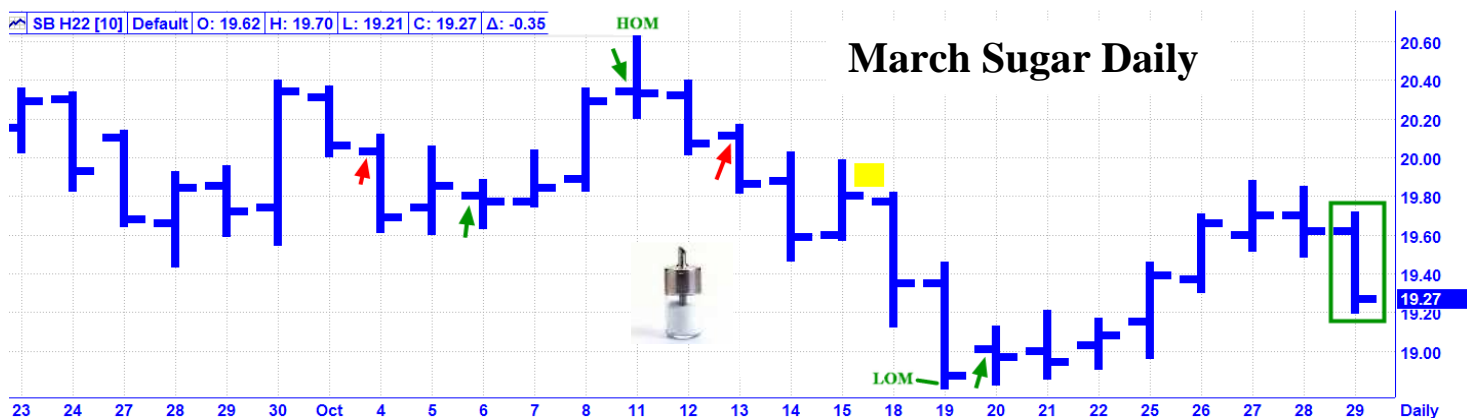
10/29 SB HV22 CL 19.27

October Review – “Following a decline into mid September, Sugar traded in a sideways trading range. The top Astro events for Sugar in October are: 10/01AC – Venus Aphelion; 10/05 AC - New Moon in Libra; 10/18 AM – Mercury in Libra turns Direct; 10/20 AM – Full Moon in Aries; and 10/29 AC – Venus Greatest Elongation East. Venus is the ruling planet and Libra is the ruling sign for Sugar. Key Dates – 10/4, 10/6, 10/11, 10/13, 10/18, 10/20, 10/29 AC”

Results – 10/4 and 10/13 were not effective. 10/18 was a pass. 10/6 was very close in price and one day ahead of a very good low. 10/11 was the exact high of the month. 10/20 was very close in price and one day ahead of the low of the month. Score – 3 out of 5 good dates = 60%.

November Update – Sugar rallied into a 10/11 high of the month, then declined into a 10/19 low of the month, and then recovered about half way into the end of the month. The top Astro event for Sugar for November is 10/29 - Venus Greatest Elongation East.

Key Dates – 11/1, 11/9, 10/15



### MARTIAN MARKETS OF THE MONTH NEW

10/29 AC – Geo Mars enters Scorpio. Scorpio is the ruling sign for Cocoa, Hogs, and T-Bonds. Secondly, Scorpio is harmonically related to: Aquarius – Copper; Pisces – Commodity Index & Oil; Taurus – Cattle & Cotton; Cancer – Silver; and Leo – Corn, Gold, & OJ.

Please see T-Bonds toward the front of the letter in the financial section.

COCOA

10/01 CC Z21 CL 2710

10/29 CC Z21 CL 2548

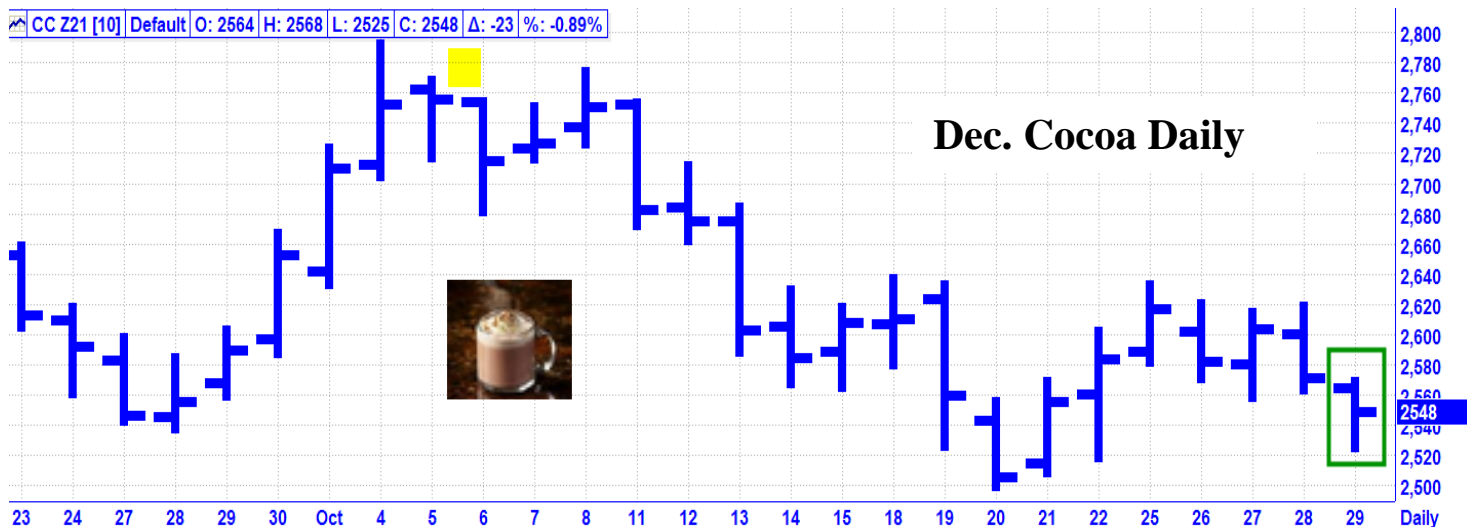
October Review – “Following a decline into the last week of September, Cocoa mounted a very strong rally to finish near the high of the month. Key resistance is at the 2800 area. The top Astro events for October are: 10/5 AC – Pluto turns Direct and 10/29 AC – Geo Mars enters Scorpio. Pluto is the ruling planet and Scorpio is the ruling sign for Cocoa. Key Dates – 10/6, 10/29 AC”

Results – 10/6 was a pass. No signals. No score.

November Update – Cocoa rallied into an early October high and then went into a strong downtrend. There was a bounce in the last week, but that rally seems to have fizzled and the market is now testing the low of the month. The top Astro events for the month are: 10/29 AC – Geo Mars enters Scorpio and 11/04 AC – New Moon in Scorpio.

Key Dates – 11/5, 11/15, 11/19, 11/22, 11/26

FUTURES AND OPTIONS TRADING IS NOT SUITABLE FOR ALL INVESTORS. THE RISK OF LOSS IS SUBSTANTIAL. AN INVESTOR COULD LOSE MORE THAN THE INITIAL INVESTMENT. PAST PERFORMANCE IS NOT NECESSARILY INDICATIVE OF FUTURE RESULTS.



### HOGS

10/01 HE Z21 CL 85.300

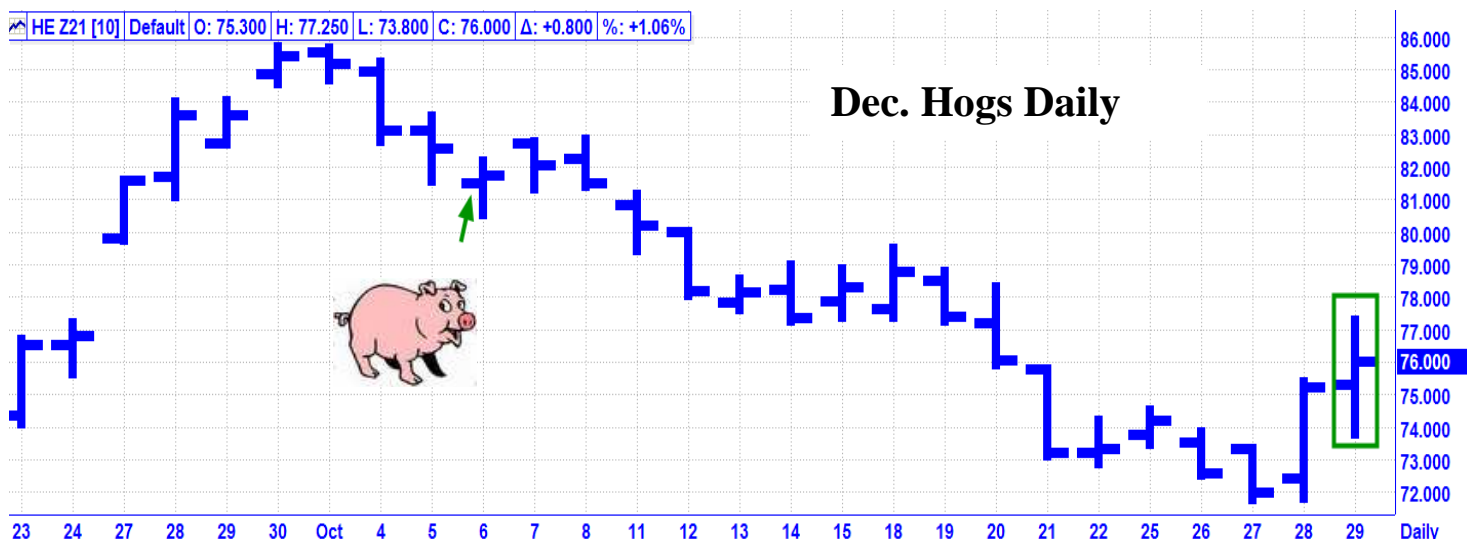
10/29 HE Z21 CL 76.000

**October Review** – “Hogs had a sharp decline into mid-month and then reversed for a big rally for new highs into the end of the month. However, the market seemed to lose some upside momentum during the last two days of the month. The top Astro events for October are: 10/5 AC – Pluto turns Direct and 10/29 AC – Geo Mars enters Scorpio. Pluto is the ruling planet and Scorpio is the ruling sign for Hogs. Key Dates – 10/6, 10/29 AC”

**Results** – 10/6 was a short term low. Score – 1 out of 1 good dates = 100%.

**November Update** – Hogs made an early October high and then went into a strong downtrend, reaching their trough 10/27-28. The top Astro events for the month are: 10/29 AC – Geo Mars enters Scorpio and 11/04 AC – New Moon in Scorpio. Scorpio is the ruling sign for Hogs.

**Key Dates** – 11/5, 11/15, 11/19, 11/22, 11/26



**FUTURES AND OPTIONS TRADING IS NOT SUITABLE FOR ALL INVESTORS. THE RISK OF LOSS IS SUBSTANTIAL. AN INVESTOR COULD LOSE MORE THAN THE INITIAL INVESTMENT. PAST PERFORMANCE IS NOT NECESSARILY INDICATIVE OF FUTURE RESULTS.**

## **SPECIAL ANNOUNCEMENTS**

### **GET THE FRACTAL FUTURES FORECAST NOW!**

**FREE! - The 2020 Fractal Futures Forecasts Results is available now FREE, just for asking! This covers approximately 27 major futures markets. You can also get a free 10 minute class to explain how you can use these charts. Many of these charts are amazingly accurate. It's educational! It's simple! It's free! It comes with a money back guarantee.**

**Call Today!**

**The 2021 Fractal Forecast is available now! Subscribers can get this for 75% off = \$30 for 27 markets for the rest of 2021. You can get a free 10 minute class on how to use this. Contact me today!**

**Time Zone – As of March 14, 2021, 2:00 AM, we are observing Eastern Daylight Time (GMT -4)  
As of November 07, 2021, 2:00 AM, we will be observing Eastern Standard Time (GMT -5).**

**Holiday Schedule – Thursday, November 25, most US markets will be closed in observance of Thanksgiving. Additionally, Friday, November 26, will be an abbreviated trading day with the NYSE closing at 1 PM EST and Stock Index Futures closing at 1:15 PM EST. Most commodities will also close early.**

**Publishing Schedule – The December letters will be on late night of Sunday, November 28, 2021.**

**Contact - Please note that our direct telephone number is 239-594-3939. International clients can call me for free on Skype at nwinski\_1 . You can reach me during market hours, or leave a message any time and I will call you back as soon as possible. I look forward to helping you.**



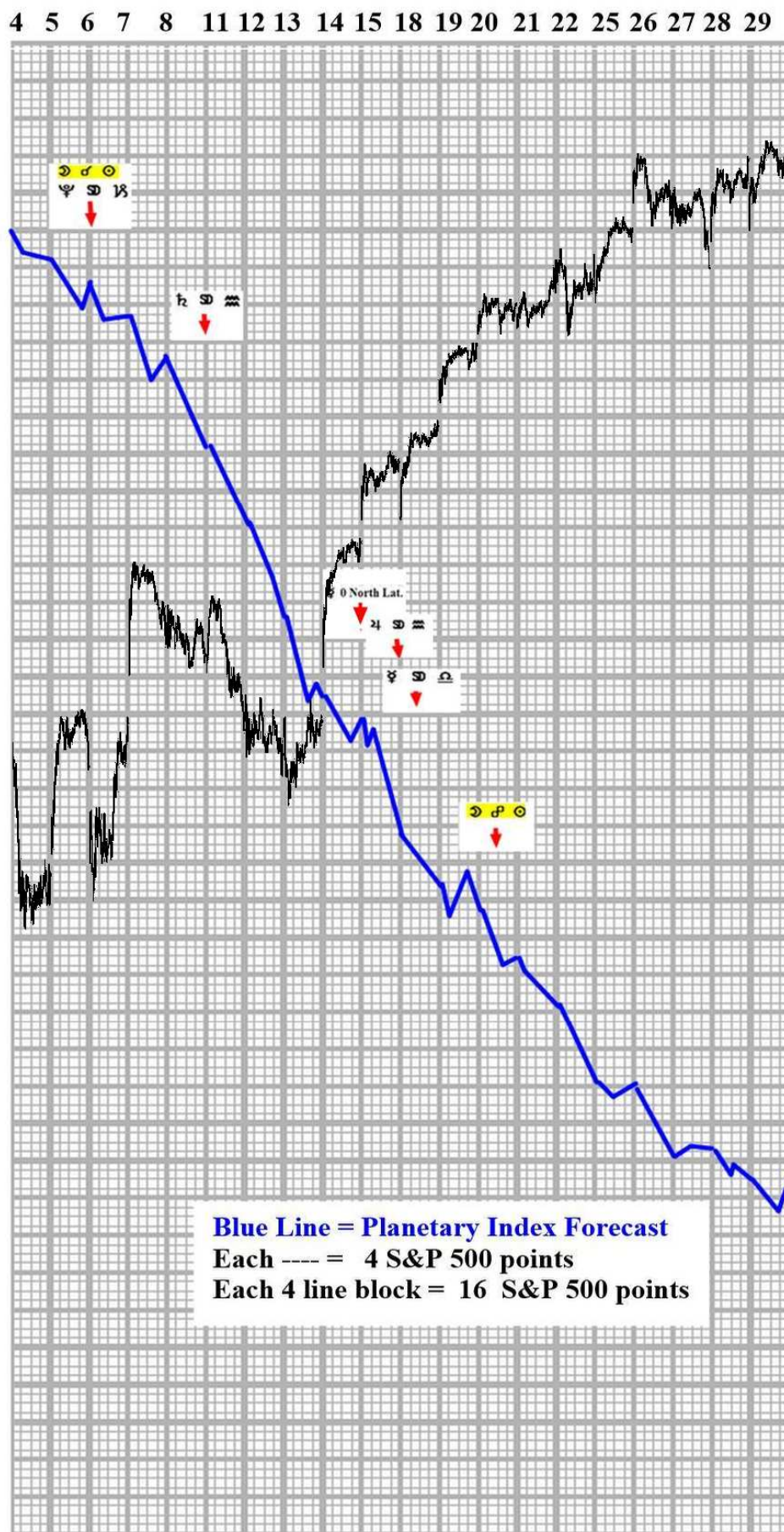
**Thank You!**

**GOOD TRADING!**

All of the material contained herein is the sole opinion of Norm Winski, the publisher of Astro-Trend Publication. Norm Winski will not be held responsible for accidental oversights, typos, or incorrect information from any sources that generate any of the opinions and comments found in this publication. Futures, Options on futures, and Forex trading carry significant risk, and is not for every investor. Only risk capital should be used. Past performance is not necessarily indicative of future results. Any person who chooses to use this information as a basis for any of their trading assumes all the liability and risk for themselves and hereby and absolutely agrees to indemnify and hold harmless Norm Winski. Risk may be more than the funds deposited in a trading account.

**FUTURES AND OPTIONS TRADING IS NOT SUITABLE FOR ALL INVESTORS. THE RISK OF LOSS IS SUBSTANTIAL. AN INVESTOR COULD LOSE MORE THAN THE INITIAL INVESTMENT. PAST PERFORMANCE IS NOT NECESSARILY INDICATIVE OF FUTURE RESULTS.**

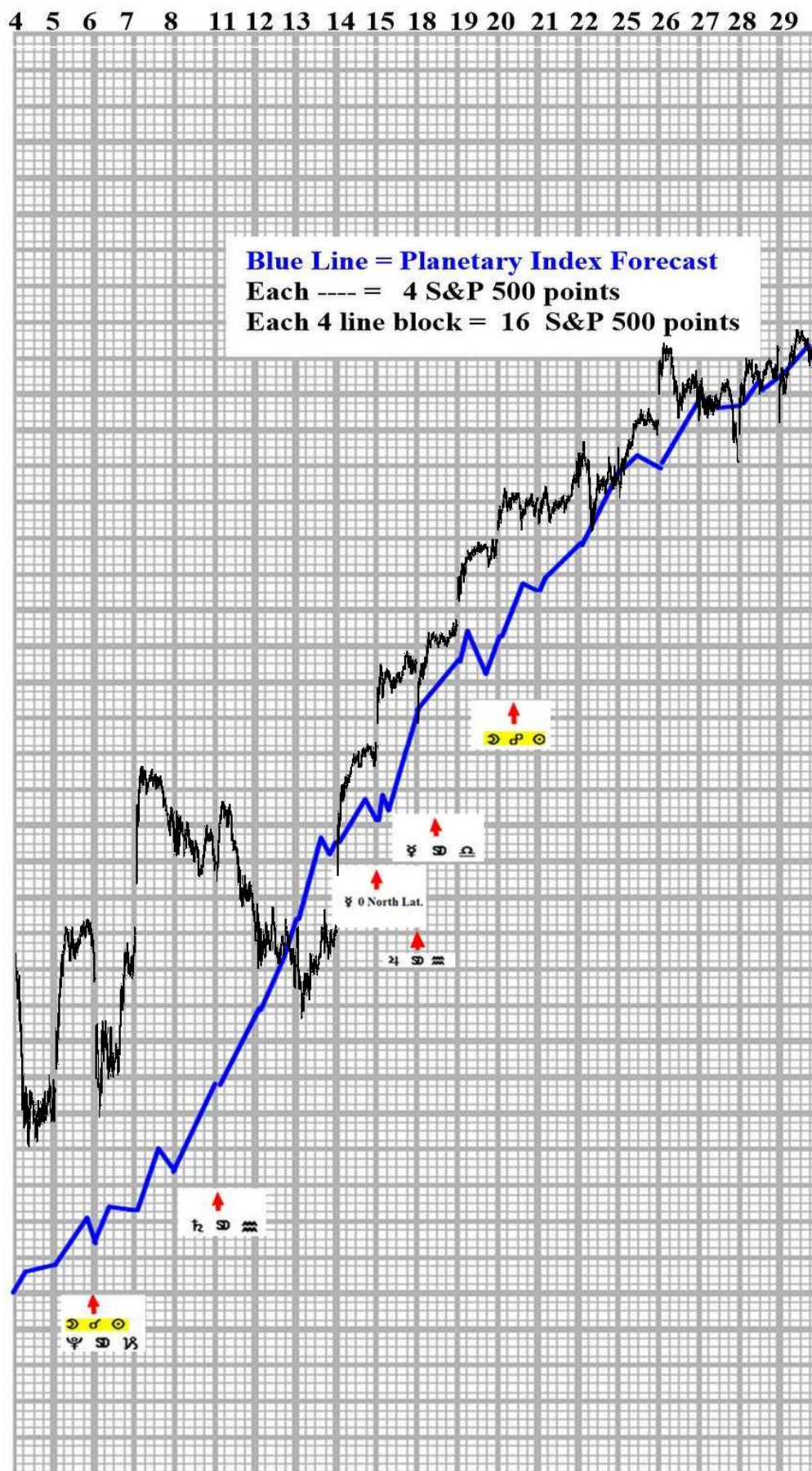
# ASTRO-TREND OCTOBER 2021 STOCK MARKET FORECAST PLANETARY INDEX



**FUTURES AND OPTIONS TRADING IS NOT SUITABLE FOR ALL INVESTORS. THE RISK OF LOSS IS SUBSTANTIAL. AN INVESTOR COULD LOSE MORE THAN THE INITIAL INVESTMENT. PAST PERFORMANCE IS NOT NECESSARILY INDICATIVE OF FUTURE RESULTS.**



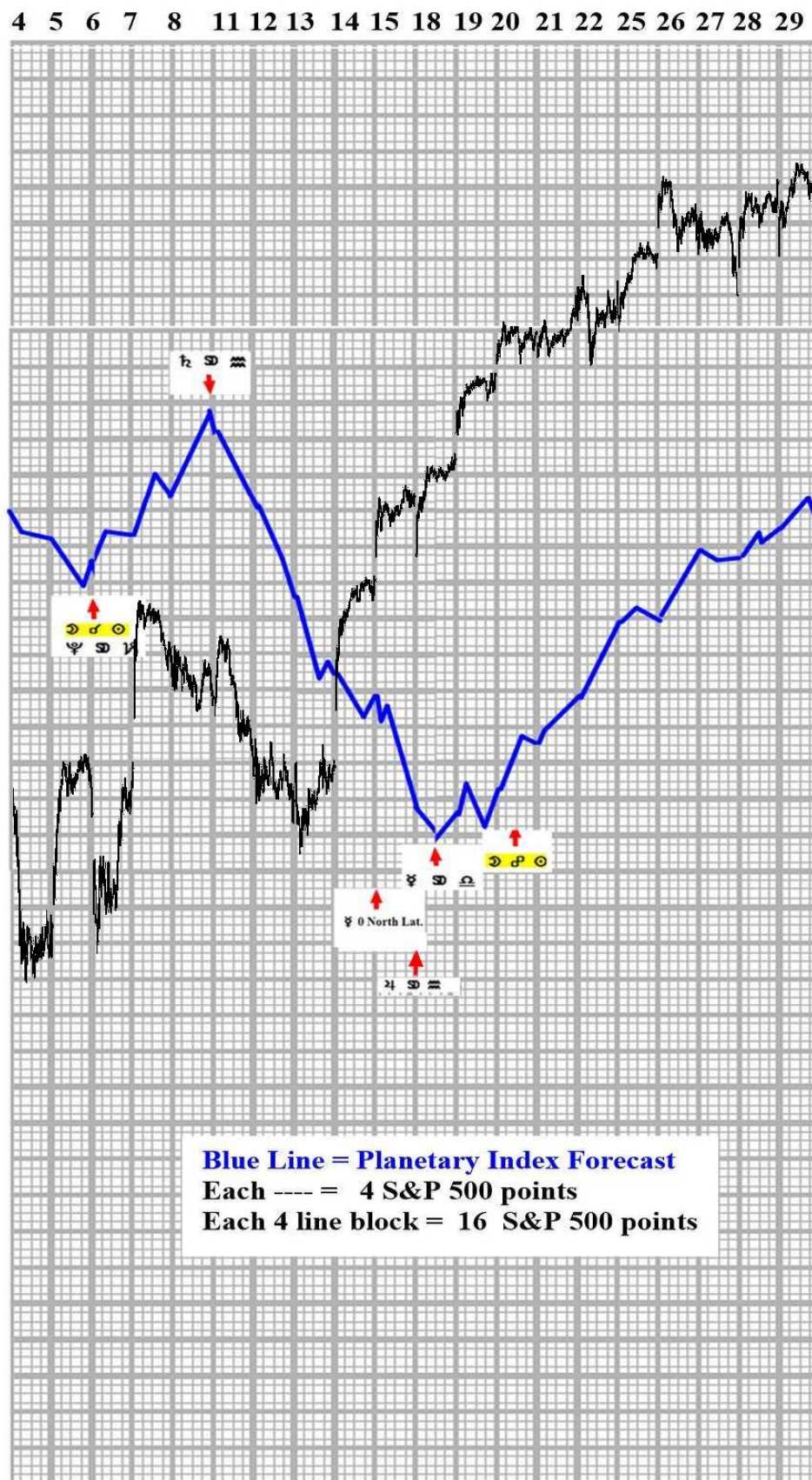
# ASTRO-TREND OCTOBER 2021 STOCK MARKET FORECAST PLANETARY INDEX INVERTED



FUTURES AND OPTIONS TRADING IS NOT SUITABLE FOR ALL INVESTORS. THE RISK OF LOSS IS SUBSTANTIAL. AN INVESTOR COULD LOSE MORE THAN THE INITIAL INVESTMENT. PAST PERFORMANCE IS NOT NECESSARILY INDICATIVE OF FUTURE RESULTS.



# ASTRO-TREND OCTOBER 2021 STOCK MARKET FORECAST POLARITY ADJUSTED PLANETARY INDEX I



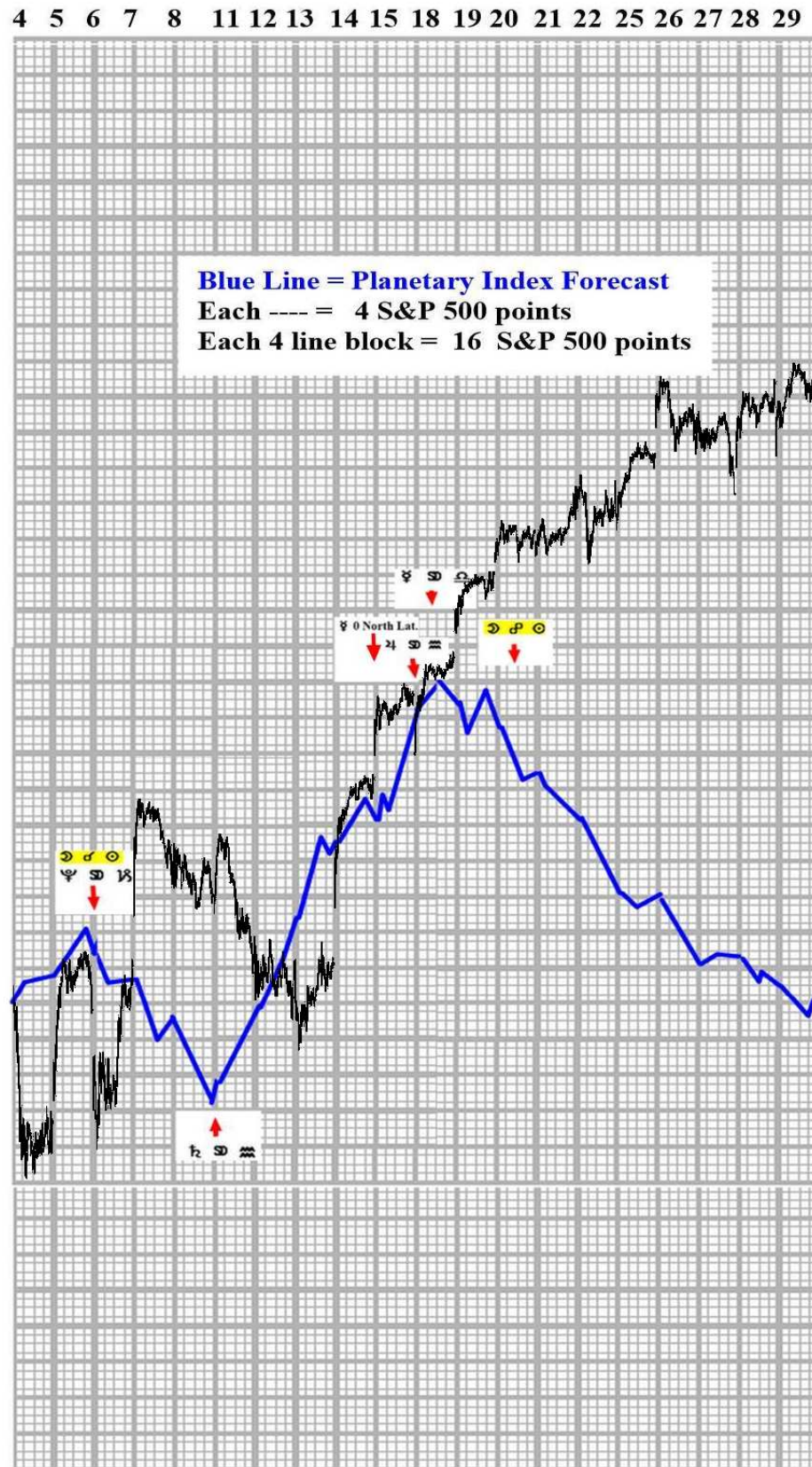
FUTURES AND OPTIONS TRADING IS NOT SUITABLE FOR ALL INVESTORS. THE RISK OF LOSS IS SUBSTANTIAL. AN INVESTOR COULD LOSE MORE THAN THE INITIAL INVESTMENT. PAST PERFORMANCE IS NOT NECESSARILY INDICATIVE OF FUTURE RESULTS.



# ASTRO-TREND

## OCTOBER 2021 STOCK MARKET FORECAST

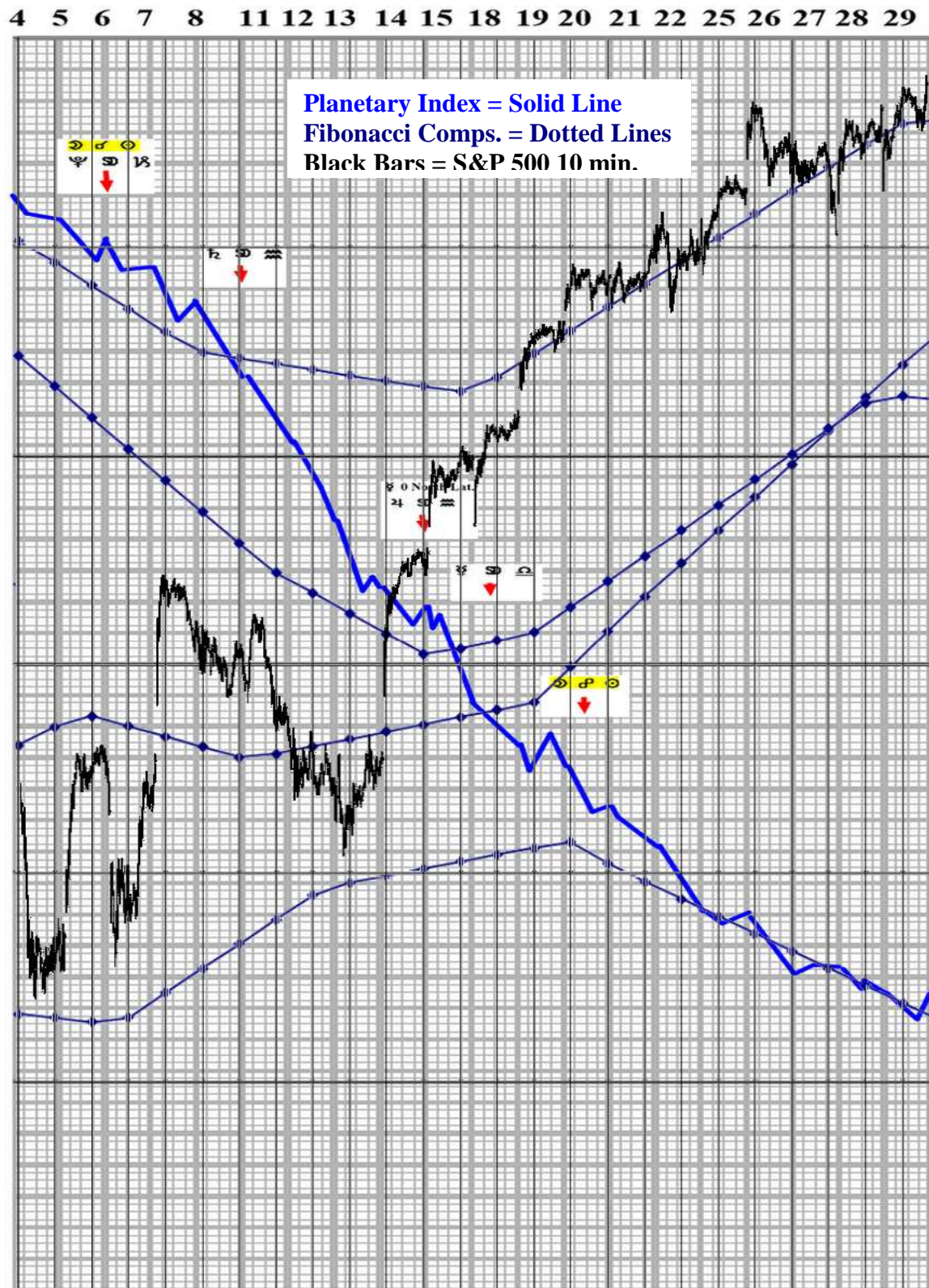
### POLARITY ADJUSTED PLANETARY INDEX II



FUTURES AND OPTIONS TRADING IS NOT SUITABLE FOR ALL INVESTORS. THE RISK OF LOSS IS SUBSTANTIAL. AN INVESTOR COULD LOSE MORE THAN THE INITIAL INVESTMENT. PAST PERFORMANCE IS NOT NECESSARILY INDICATIVE OF FUTURE RESULTS.



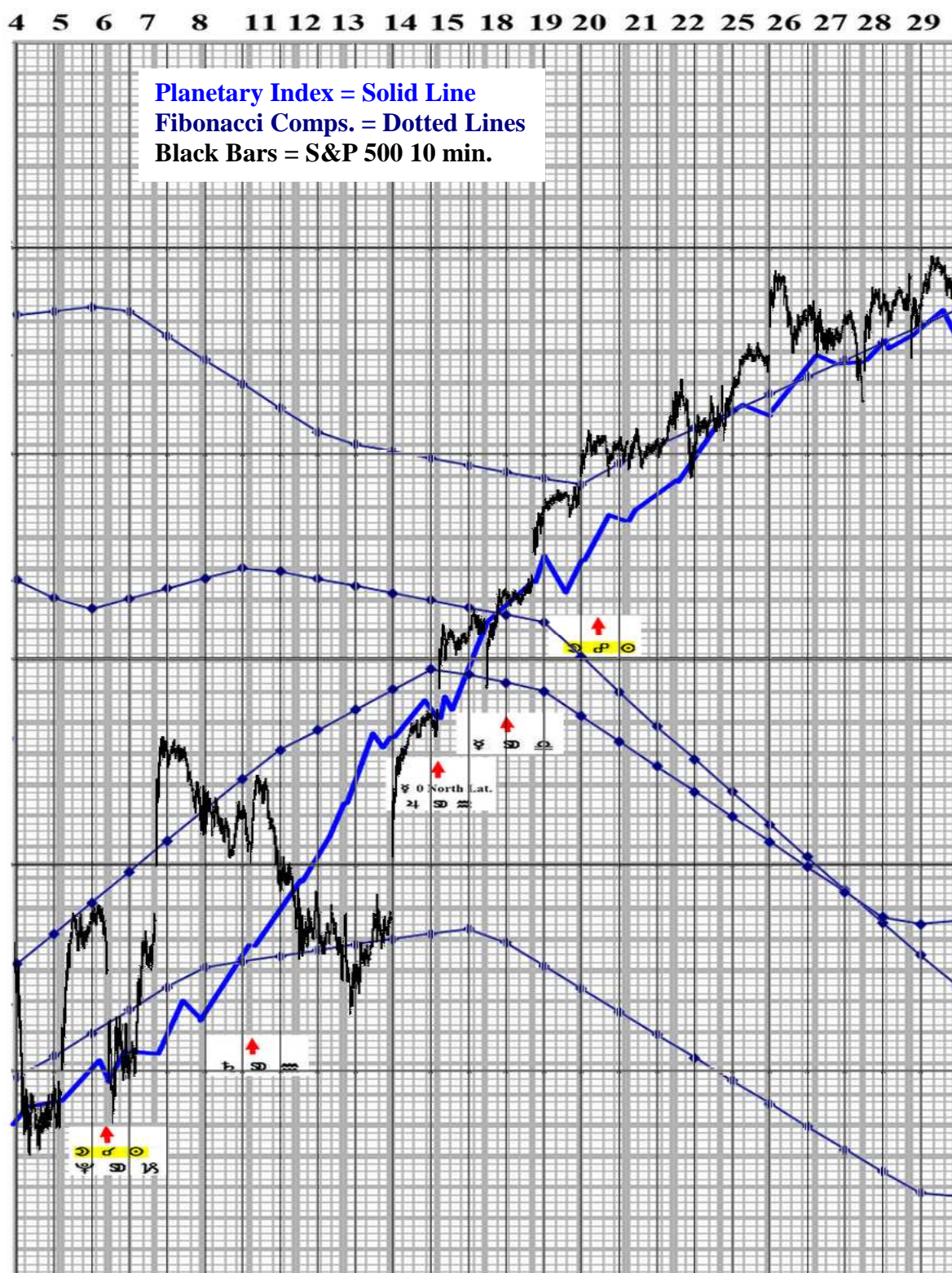
# October 2021 Planetary Index & October 2021 Fibonacci Composite Averages



**FUTURES AND OPTIONS TRADING IS NOT SUITABLE FOR ALL INVESTORS. THE RISK OF LOSS IS SUBSTANTIAL. AN INVESTOR COULD LOSE MORE THAN THE INITIAL INVESTMENT. PAST PERFORMANCE IS NOT NECESSARILY INDICATIVE OF FUTURE RESULTS.**



# Inverted October 2021 Planetary Index & October 2021 Fibonacci Composite Averages



**FUTURES AND OPTIONS TRADING IS NOT SUITABLE FOR ALL INVESTORS. THE RISK OF LOSS IS SUBSTANTIAL. AN INVESTOR COULD LOSE MORE THAN THE INITIAL INVESTMENT. PAST PERFORMANCE IS NOT NECESSARILY INDICATIVE OF FUTURE RESULTS.**

November 2021

## ASTRO-TREND KEY DATE ACTIVITY CALENDAR

	1	2	3	4	5	8	9	10	11	12	15	16	17	18	19	22	23	24	26
CATTLE	<u>X</u>	x	<u>X</u>	<u>X</u>	<u>X</u>		x	<u>x</u>		<u>x</u>	X		x	<u>xx</u>	<u>xX</u>	<u>X</u>	x	<u>Xx</u>	<u>X</u>
	20		12	14	26										20	12			8
COCOA	<u>X</u>		x		<u>X</u>	x	<u>X</u>		x	<u>xx</u>	X	x	<u>X</u>	<u>xX</u>	<u>XXx</u>	<u>X</u>	x	<u>Xx</u>	<u>X</u>
	12				22		10				16		8		30	30		8	22
COFFEE	X	x			X	x			<u>x</u>	x				x	<u>xx</u>	<u>X</u>	<u>x</u>		<u>X</u>
																8			8
COPPER	<u>X</u>	x	<u>X</u>	X	<u>X</u>		x	<u>x</u>	<u>x</u>	x	X	x	<u>X</u>	<u>x</u>	<u>xX</u>	<u>X</u>	<u>xx</u>	<u>Xx</u>	<u>x</u>
	22		8		14						12		8			14			
CORN	<u>X</u>	x	<u>X</u>	x	<u>X</u>	x	x	<u>x</u>		<u>xx</u>	X	x	x	x	<u>xXx</u>	<u>X</u>	x	<u>xX</u>	<u>X</u>
	10		12		22						18				20	42			24
COTTON	<u>X</u>	x	<u>X</u>	<u>X</u>	<u>X</u>		x	<u>x</u>		x	X		x	<u>xx</u>	<u>xX</u>	<u>X</u>	x	<u>Xx</u>	<u>X</u>
	20		12	14	26										20	12			8
CI/CRB	<u>X</u>				<u>X</u>		x			<u>xx</u>	X				<u>Xx</u>	<u>X</u>	x		<u>X</u>
	12				16						12				20	8			12
GOLD	X	x	x	x	<u>X</u>		x			x		x	x		<u>X</u>	X		x	<u>x</u>
					18										16				
HOGS	<u>X</u>		x	x	<u>X</u>	x	<u>X</u>		x	<u>xx</u>	X	x	<u>X</u>	<u>xX</u>	<u>xXx</u>	<u>X</u>	x	<u>Xx</u>	<u>X</u>
	12				22		10				16		8		30	30		8	22
LUNAR					<u>x</u>										<u>X</u>				
															8				
MARS	x						x												
MERCURY	<u>x</u>															<u>x</u>			
OATS	<u>x</u>		<u>X</u>		<u>X</u>	x		<u>x</u>		x	<u>X</u>	x		x	<u>xXx</u>	<u>X</u>	<u>xxxX</u>		<u>X</u>
			12		24						24				20	46			24
	1	2	3	4	5	8	9	10	11	12	15	16	17	18	19	22	23	24	26
OIL	<u>X</u>		<u>X</u>	<u>xX</u>	<u>X</u>	<u>X</u>	x	X		<u>Xx</u>	<u>X</u>	X			<u>Xx</u>	<u>X</u>	x	X	<u>X</u>
	20		8		16	8				12	18				20	8			12
OPEC	X					<u>X</u>			x	<u>x</u>	X		x			<u>x</u>	X		<u>X</u>
					8														12
OJ	X	x	<u>x</u>	x	<u>X</u>		x			x		x	x		<u>X</u>	X		<u>x</u>	<u>x</u>
					18										16				
SILVER					x		<u>x</u>								<u>X</u>		<u>x</u>		x
															16				
SOYBNS.	x		<u>X</u>		<u>X</u>	x		<u>x</u>		x	<u>X</u>			x	<u>xXx</u>	<u>X</u>	<u>xx</u>	X	<u>X</u>
			12		26						18				20	42			20
STOCKS	<u>Xx</u>	x	<u>XX</u>	Xx	<u>X</u>	<u>xX</u>	<u>X</u>	<u>xXx</u>	<u>X</u>	<u>xxx</u>	<u>X</u>	x	<u>xxXxxX</u>	<u>XXxXX</u>	<u>XXxXX</u>	<u>xxXxXx</u>	<u>xX</u>	<u>X</u>	<u>X</u>
	40		16		40	18	10	14	16		24		22	8	34	72	26		32
SUGAR	<u>Xx</u>	x			<u>x</u>			<u>X</u>			<u>X</u>				<u>xx</u>	x	x		<u>x</u>
	20							8			10								
T-BONDS	X		<u>xx</u>	x	<u>X</u>	<u>xX</u>	<u>X</u>	<u>Xx</u>	<u>Xxxxx</u>	<u>X</u>		<u>xxXxxX</u>	<u>XXxXXxxX</u>	<u>XXxXXxxX</u>	<u>XXxXXxxX</u>	<u>XXxXXxxX</u>	<u>X</u>	<u>X</u>	<u>X</u>
	30				32	26	16	14	14		22		22	10	42	56	32		38
VENUS		x			x											x			
WHEAT	<u>X</u>	x	<u>X</u>		<u>X</u>	x		<u>X</u>		x	<u>X</u>			x	<u>XXx</u>	<u>X</u>	<u>xx</u>	X	<u>X</u>
	24		8		26			8			28				22	48			20
	1	2	3	4	5	8	9	10	11	12	15	16	17	18	19	22	23	24	26

LEGEND: x = CIT; x = Important CIT; X = Very Important CIT; X = Major CIT

FUTURES AND OPTIONS TRADING IS NOT SUITABLE FOR ALL INVESTORS. THE RISK OF LOSS IS SUBSTANTIAL. AN INVESTOR COULD LOSE MORE THAN THE INITIAL INVESTMENT. PAST PERFORMANCE IS NOT NECESSARILY INDICATIVE OF FUTURE RESULTS.

November 2021

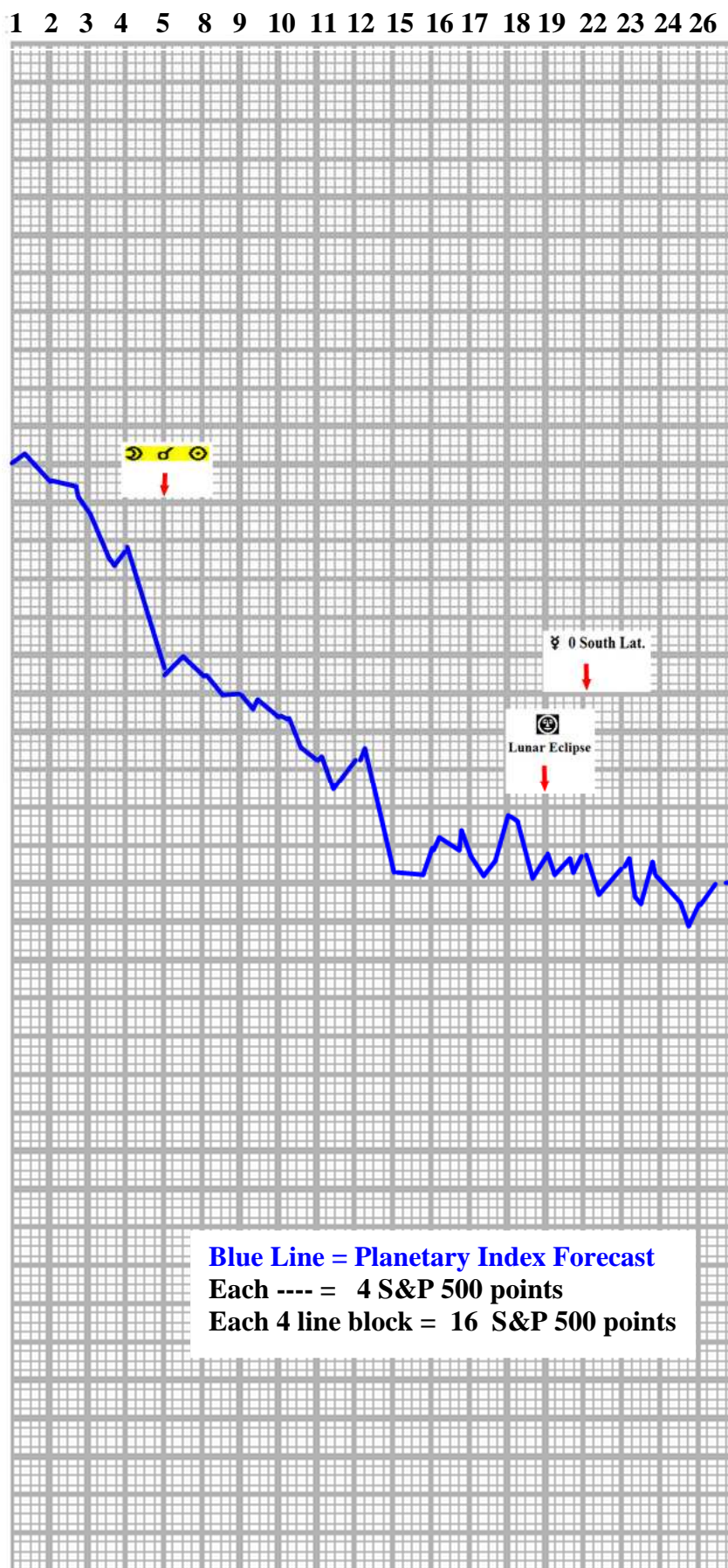
## ASTRO-TREND KEY DATE ACTIVITY CALENDAR

	1	2	3	4	5	8	9	10	11	12	15	16	17	18	19	22	23	24	26
AUSTRAL.	<u>X</u>					<u>X</u>			<u>xx</u>						<u>x</u>	<u>x</u>		<u>x</u>	
10						<u>8</u>													
AUSSIE \$							<u>X</u>	<u>x</u>				<u>X</u>			<u>x</u>	<u>X</u>			<u>X</u>
							<u>8</u>					<u>8</u>							<u>8</u>
CANADA	<u>X</u>					<u>X</u>					<u>X</u>					<u>x</u>			<u>x</u>
	<u>8</u>				<u>10</u>					<u>14</u>									<u>x</u>
C-BANK	<u>X</u>				<u>X</u>		<u>X</u>		<u>X</u>	<u>X</u>	<u>X</u>	<u>X</u>			<u>x</u>	<u>x</u>			<u>X</u>
					<u>8</u>					<u>10</u>									
GERMANY	<u>x</u>					<u>x</u>			<u>X</u>	<u>X</u>				<u>x</u>					<u>X</u>
									<u>8</u>	<u>14</u>									<u>14</u>
EURO	<u>x</u>										<u>X</u>					<u>X</u>			
EUROBNK	<u>x</u>					<u>X</u>						<u>X</u>	<u>x</u>						<u>x</u>
					<u>12</u>														<u>X</u>
JAPAN		<u>xx</u>				<u>X</u>						<u>x</u>			<u>x</u>	<u>X</u>			<u>X</u>
					<u>8</u>														
J-BANK	<u>x</u>	<u>x</u>			<u>x</u>	<u>x</u>		<u>x</u>		<u>x</u>							<u>X</u>		<u>x</u>
JAP.YEN								<u>x</u>	<u>x</u>						<u>X</u>	<u>X</u>		<u>x</u>	<u>X</u>
TOK.S.E.	<u>x</u>				<u>x</u>	<u>X</u>					<u>X</u>		<u>x</u>		<u>X</u>	<u>12</u>		<u>x</u>	<u>X</u>
											<u>16</u>					<u>X</u>	<u>20</u>		<u>16</u>
SWITZ.					<u>x</u>			<u>x</u>			<u>x</u>			<u>x</u>					
SF			<u>X</u>		<u>X</u>						<u>X</u>					<u>X</u>		<u>x</u>	<u>X</u>
					<u>8</u>						<u>8</u>					<u>8</u>			
UK						<u>X</u>				<u>X</u>			<u>X</u>	<u>x</u>		<u>x</u>		<u>x</u>	<u>x</u>
BNK.ENG.							<u>x</u>		<u>x</u>		<u>x</u>						<u>X</u>	<u>x</u>	
BnkEn/Fd	<u>X</u>						<u>X</u>				<u>X</u>	<u>Xx</u>							
US	<u>X</u>				<u>x</u>	<u>X</u>	<u>x</u>	<u>X</u>								<u>X</u>		<u>x</u>	<u>X</u>
					<u>10</u>														<u>8</u>
US FED	<u>X</u>				<u>x</u>						<u>x</u>			<u>X</u>			<u>x</u>	<u>xx</u>	<u>X</u>
																			<u>8</u>
POWELL			<u>x</u>			<u>X</u>	<u>X</u>	<u>XX</u>	<u>X</u>	<u>xX</u>				<u>XX</u>					
					<u>12</u>	<u>8</u>	<u>8</u>	<u>8</u>											
US \$	<u>Xx</u>		<u>x</u>	<u>x</u>	<u>X</u>	<u>xX</u>	<u>X</u>	<u>Xx</u>	<u>Xxx</u>	<u>X</u>	<u>xXXx</u>	<u>x</u>	<u>X</u>	<u>XXx</u>	<u>XX</u>	<u>XX</u>	<u>XX</u>	<u>X</u>	<u>x</u>
	<u>12</u>				<u>26</u>	<u>24</u>		<u>14</u>	<u>10</u>	<u>12</u>	<u>8</u>		<u>32</u>	<u>20</u>	<u>24</u>			<u>10</u>	
NYSE						<u>X</u>				<u>X</u>			<u>x</u>	<u>x</u>					<u>X</u>
						<u>12</u>				<u>10</u>									
DJIA	<u>X</u>	<u>x</u>		<u>xx</u>		<u>X</u>		<u>x</u>			<u>X</u>		<u>x</u>	<u>x</u>		<u>X</u>		<u>x</u>	<u>X</u>
	<u>8</u>					<u>12</u>													
S&P500	<u>X</u>	<u>xx</u>	<u>x</u>	<u>x</u>	<u>x</u>	<u>Xx</u>				<u>X</u>						<u>X</u>		<u>X</u>	<u>X</u>
	<u>8</u>					<u>10</u>												<u>10</u>	<u>8</u>
NASD						<u>X</u>				<u>X</u>			<u>X</u>	<u>X</u>		<u>X</u>			
						<u>8</u>				<u>12</u>									
STOX	<u>x</u>	<u>x</u>		<u>x</u>	<u>x</u>	<u>X</u>		<u>x</u>		<u>xxX</u>			<u>x</u>	<u>x</u>		<u>X</u>		<u>x</u>	<u>x</u>
					<u>9</u>														
WRLDBNKS	<u>x</u>				<u>x</u>	<u>xx</u>	<u>x</u>	<u>x</u>	<u>x</u>		<u>x</u>		<u>x</u>	<u>x</u>	<u>x</u>	<u>x</u>	<u>x</u>	<u>xx</u>	<u>x</u>
	1	2	3	4	5	8	9	10	11	12	15	16	17	18	19	22	23	24	26

LEGEND: x = CIT; x = Important CIT; X = Very Important CIT; X = Major CIT

FUTURES AND OPTIONS TRADING IS NOT SUITABLE FOR ALL INVESTORS. THE RISK OF LOSS IS SUBSTANTIAL. AN INVESTOR COULD LOSE MORE THAN THE INITIAL INVESTMENT. PAST PERFORMANCE IS NOT NECESSARILY INDICATIVE OF FUTURE RESULTS.

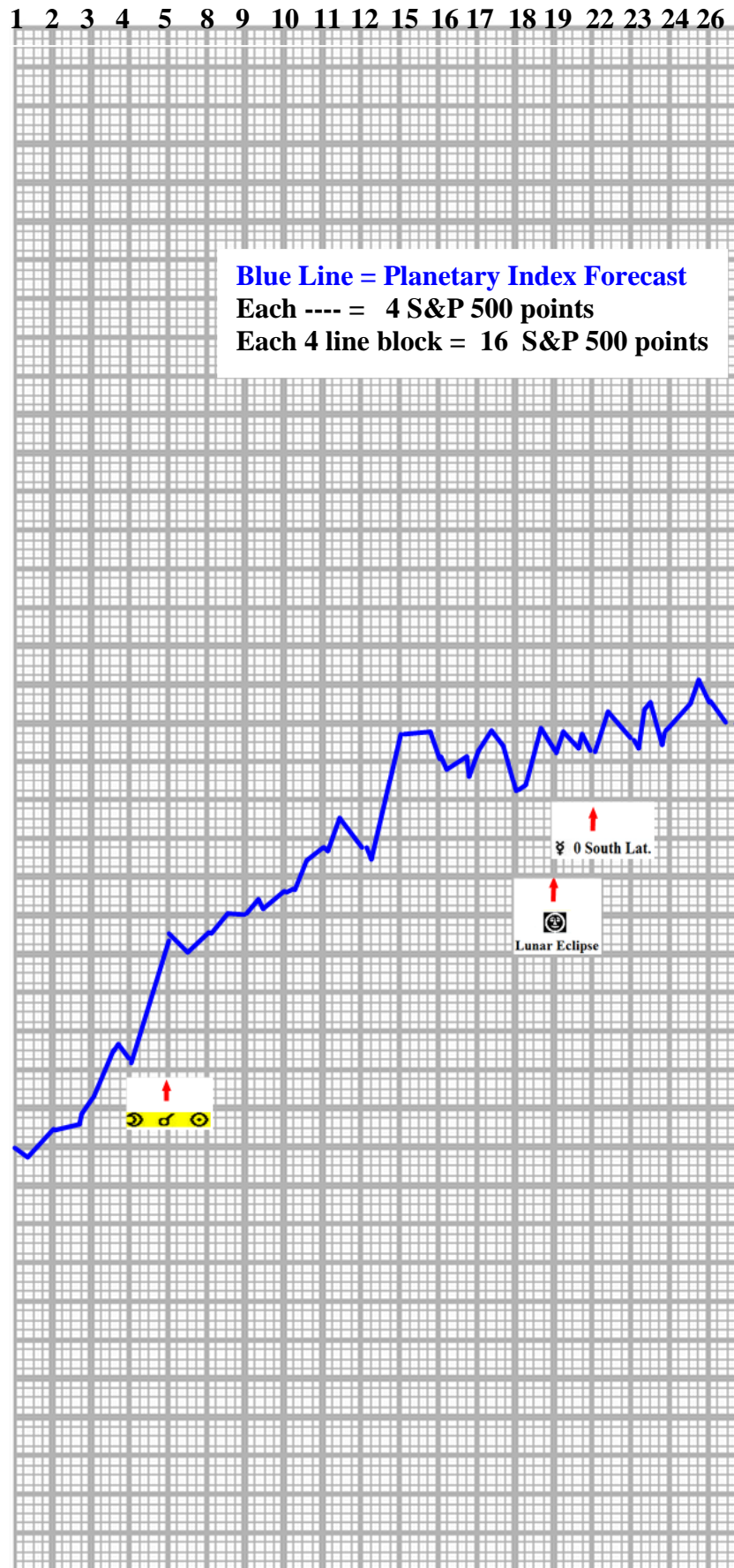
**ASTRO-TREND  
NOVEMBER 2021 STOCK MARKET FORECAST  
PLANETARY INDEX**



**FUTURES AND OPTIONS TRADING IS NOT SUITABLE FOR ALL INVESTORS. THE RISK OF LOSS IS SUBSTANTIAL. AN INVESTOR COULD LOSE MORE THAN THE INITIAL INVESTMENT. PAST PERFORMANCE IS NOT NECESSARILY INDICATIVE OF FUTURE RESULTS.**



**ASTRO-TREND  
NOVEMBER 2021 STOCK MARKET FORECAST  
PLANETARY INDEX INVERTED**

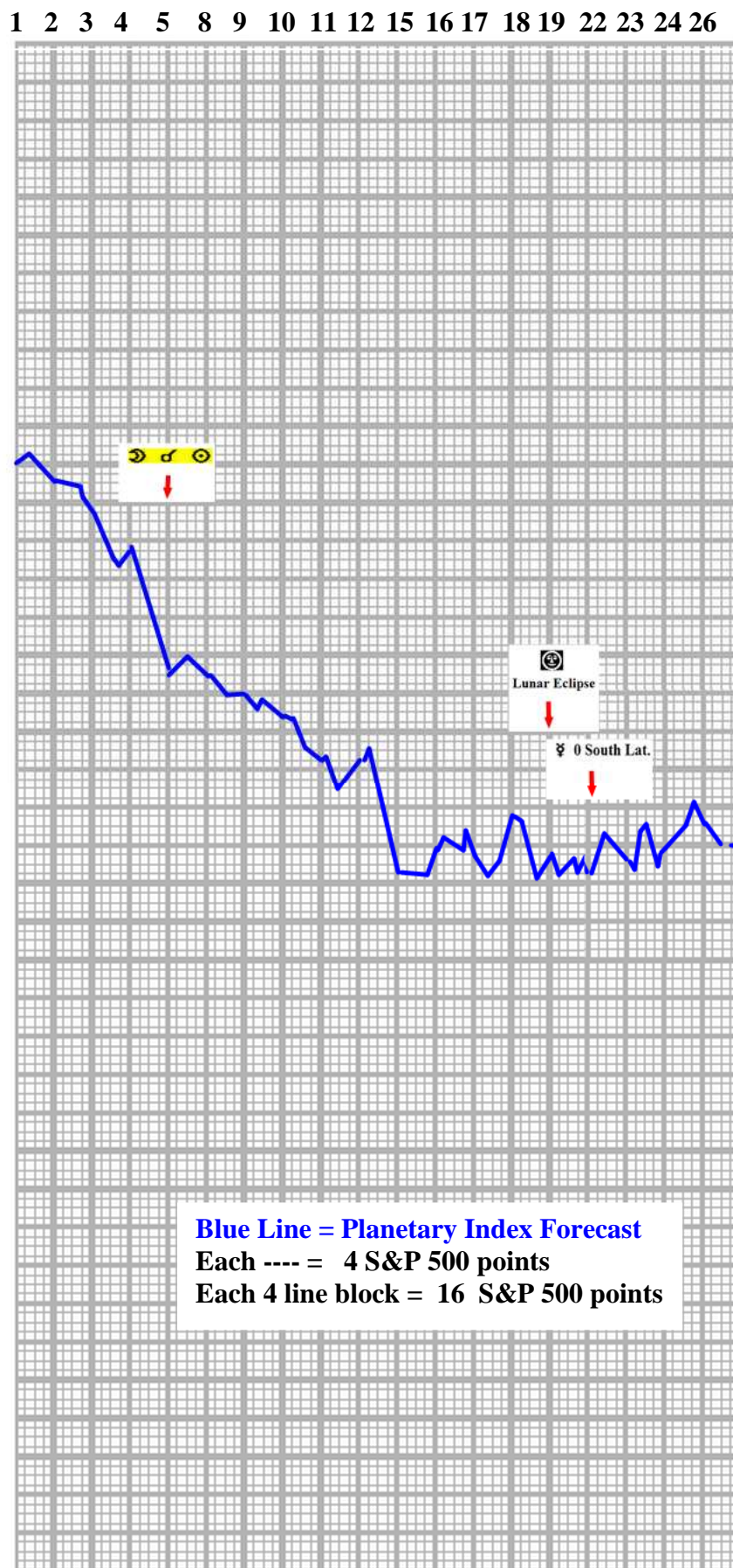


**FUTURES AND OPTIONS TRADING IS NOT SUITABLE FOR ALL INVESTORS. THE RISK OF LOSS IS SUBSTANTIAL. AN INVESTOR COULD LOSE MORE THAN THE INITIAL INVESTMENT. PAST PERFORMANCE IS NOT NECESSARILY INDICATIVE OF FUTURE RESULTS.**

# ASTRO-TREND

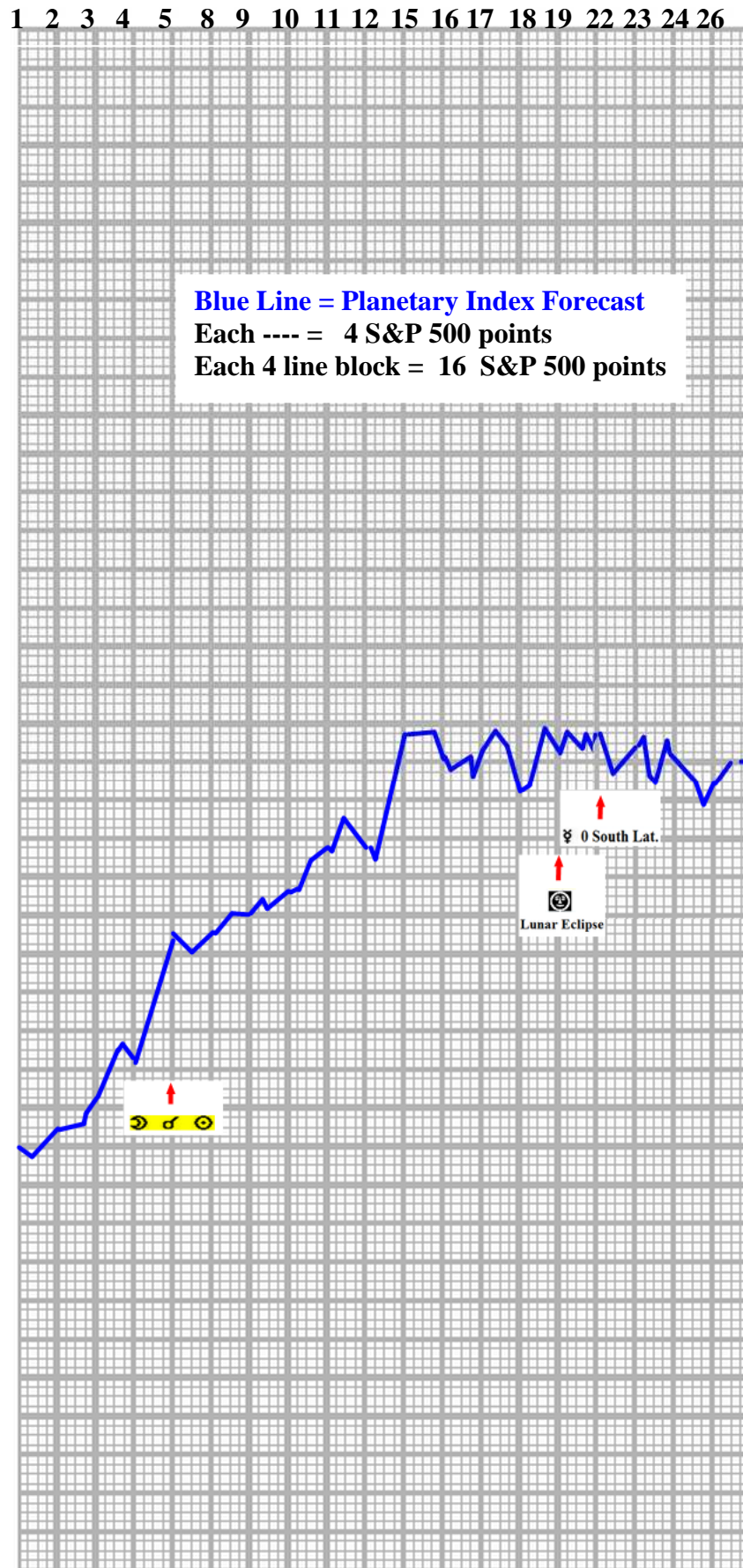
## NOVEMBER 2021 STOCK MARKET FORECAST

### POLARITY ADJUSTED PLANETARY INDEX I



FUTURES AND OPTIONS TRADING IS NOT SUITABLE FOR ALL INVESTORS. THE RISK OF LOSS IS SUBSTANTIAL. AN INVESTOR COULD LOSE MORE THAN THE INITIAL INVESTMENT. PAST PERFORMANCE IS NOT NECESSARILY INDICATIVE OF FUTURE RESULTS.

# ASTRO-TREND NOVEMBER 2021 STOCK MARKET FORECAST POLARITY ADJUSTED PLANETARY INDEX II

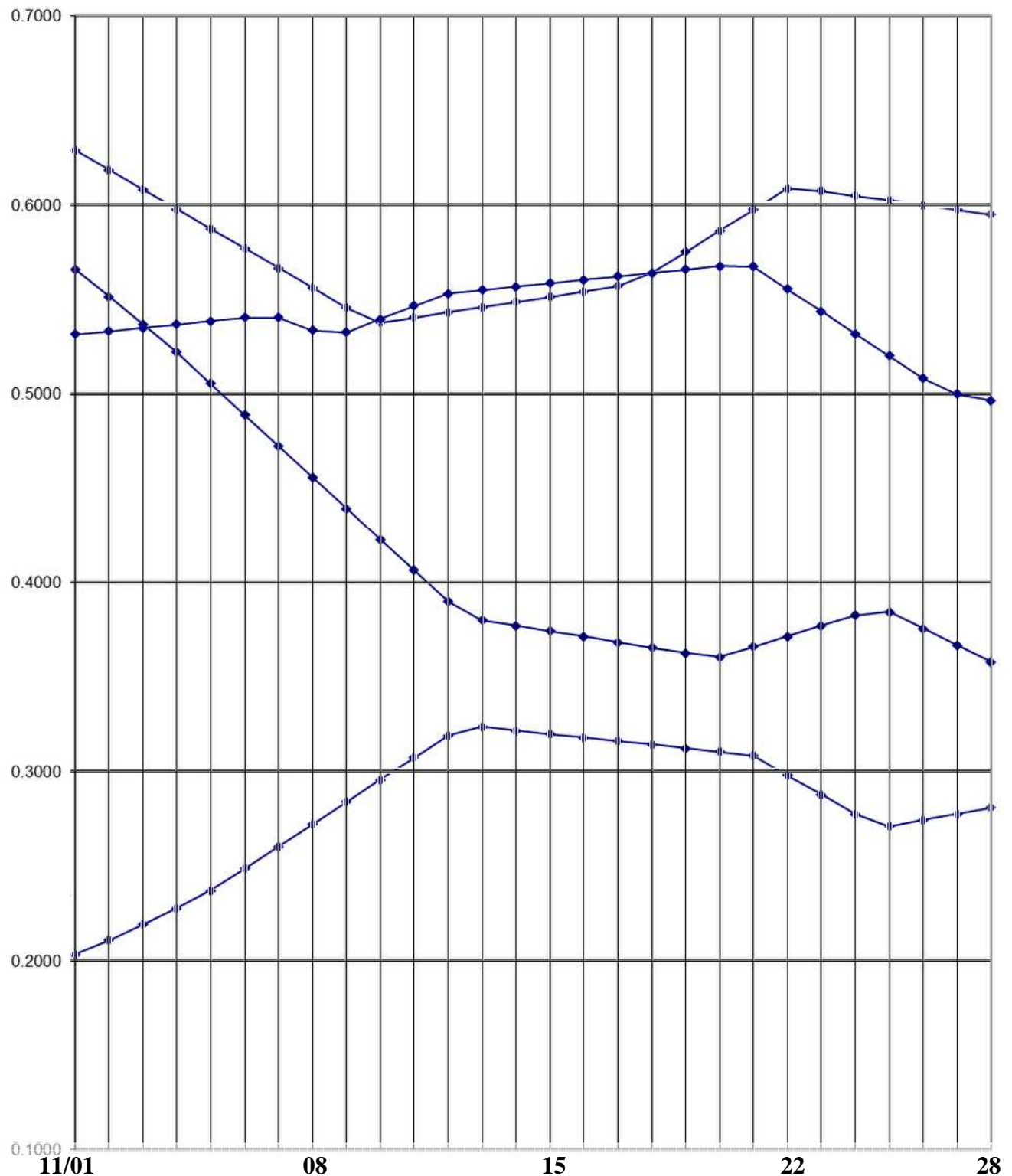


FUTURES AND OPTIONS TRADING IS NOT SUITABLE FOR ALL INVESTORS. THE RISK OF LOSS IS SUBSTANTIAL. AN INVESTOR COULD LOSE MORE THAN THE INITIAL INVESTMENT. PAST PERFORMANCE IS NOT NECESSARILY INDICATIVE OF FUTURE RESULTS.



# FIBONACCI COMPOSITE AVERAGE

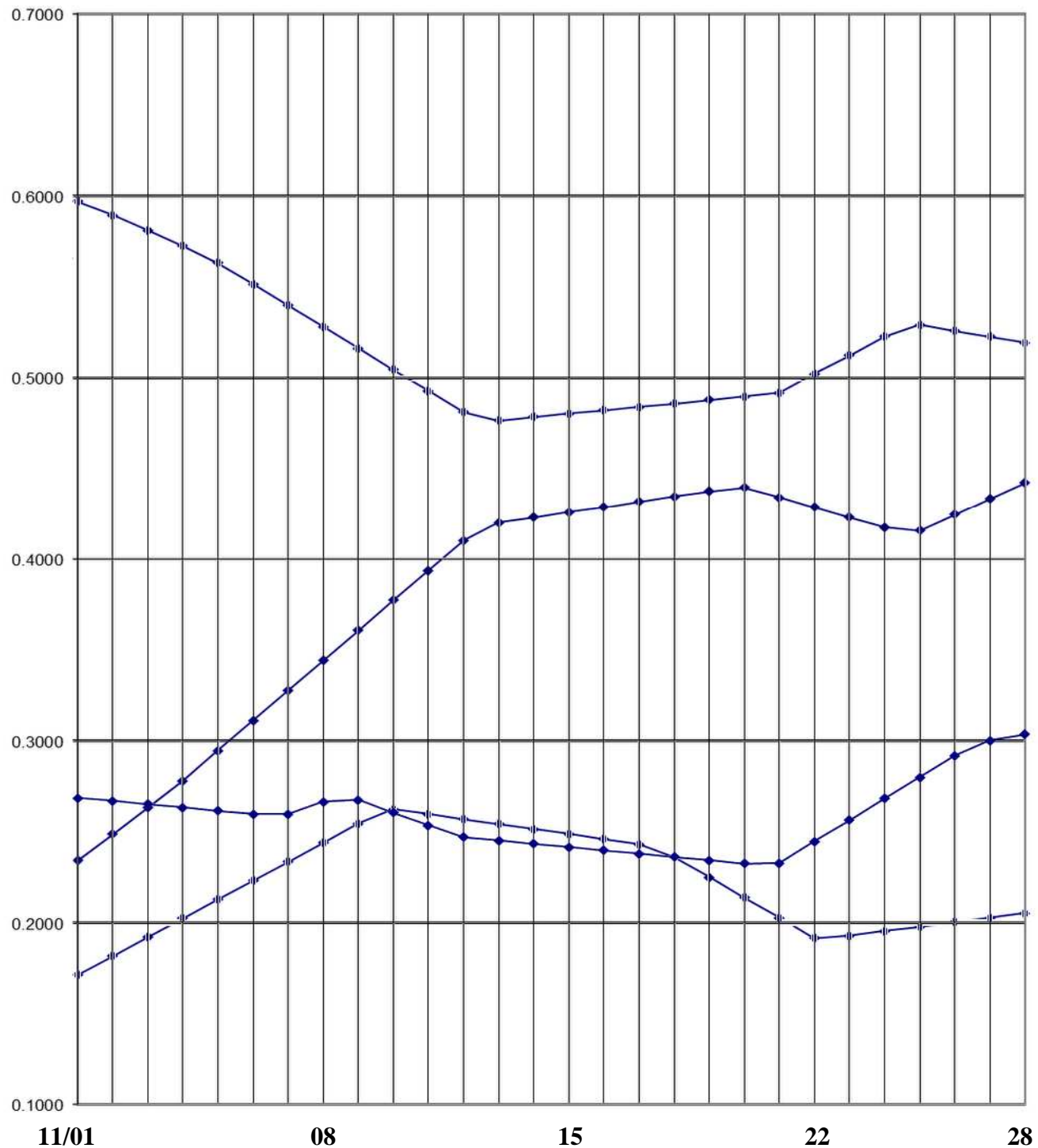
NOVEMBER 2021



**FUTURES AND OPTIONS TRADING IS NOT SUITABLE FOR ALL INVESTORS. THE RISK OF LOSS IS SUBSTANTIAL. AN INVESTOR COULD LOSE MORE THAN THE INITIAL INVESTMENT. PAST PERFORMANCE IS NOT NECESSARILY INDICATIVE OF FUTURE RESULTS.**

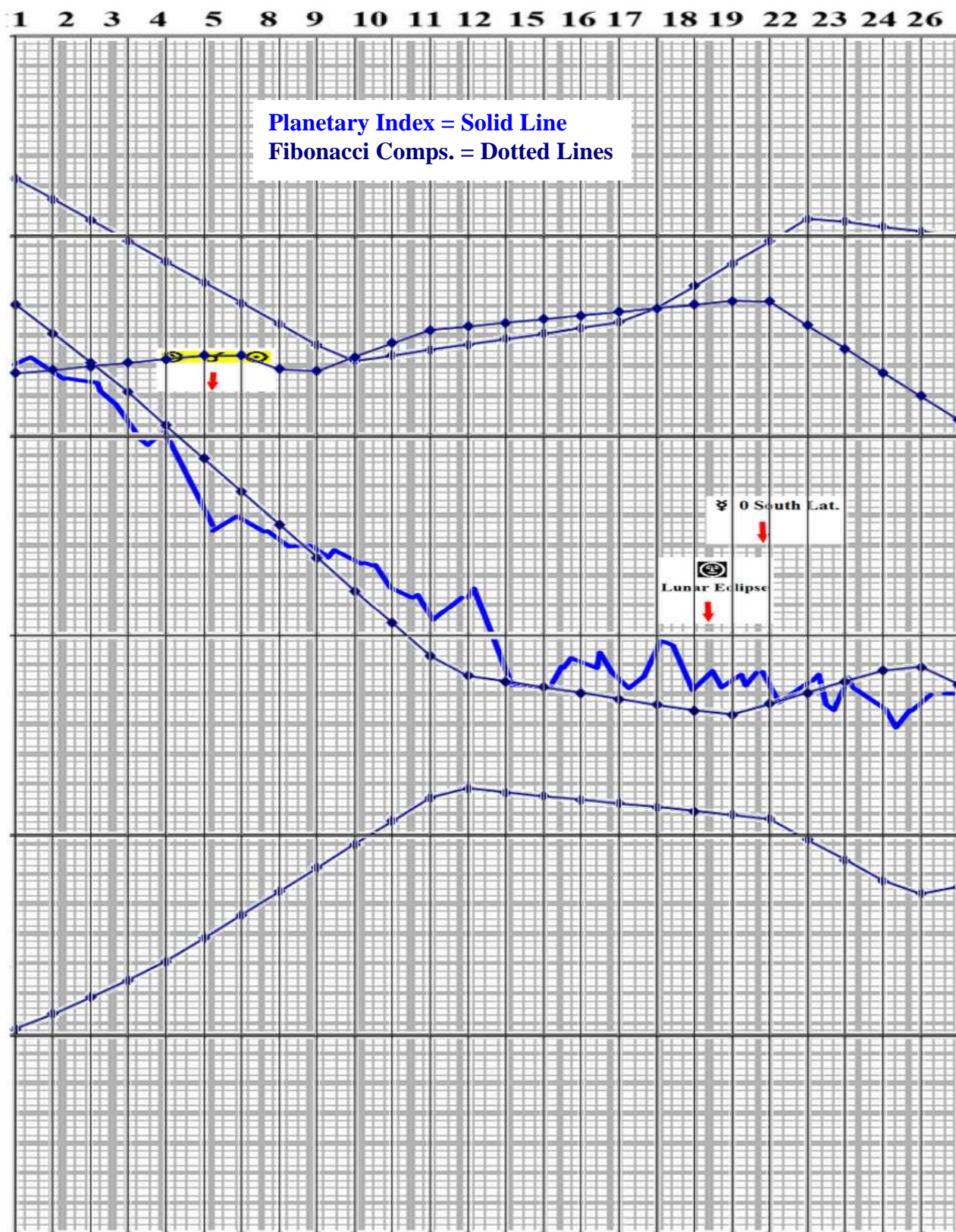
# INVERTED FIBONACCI COMPOSITE AVERAGES

NOVEMBER 2021



**FUTURES AND OPTIONS TRADING IS NOT SUITABLE FOR ALL INVESTORS. THE RISK OF LOSS IS SUBSTANTIAL. AN INVESTOR COULD LOSE MORE THAN THE INITIAL INVESTMENT. PAST PERFORMANCE IS NOT NECESSARILY INDICATIVE OF FUTURE RESULTS.**

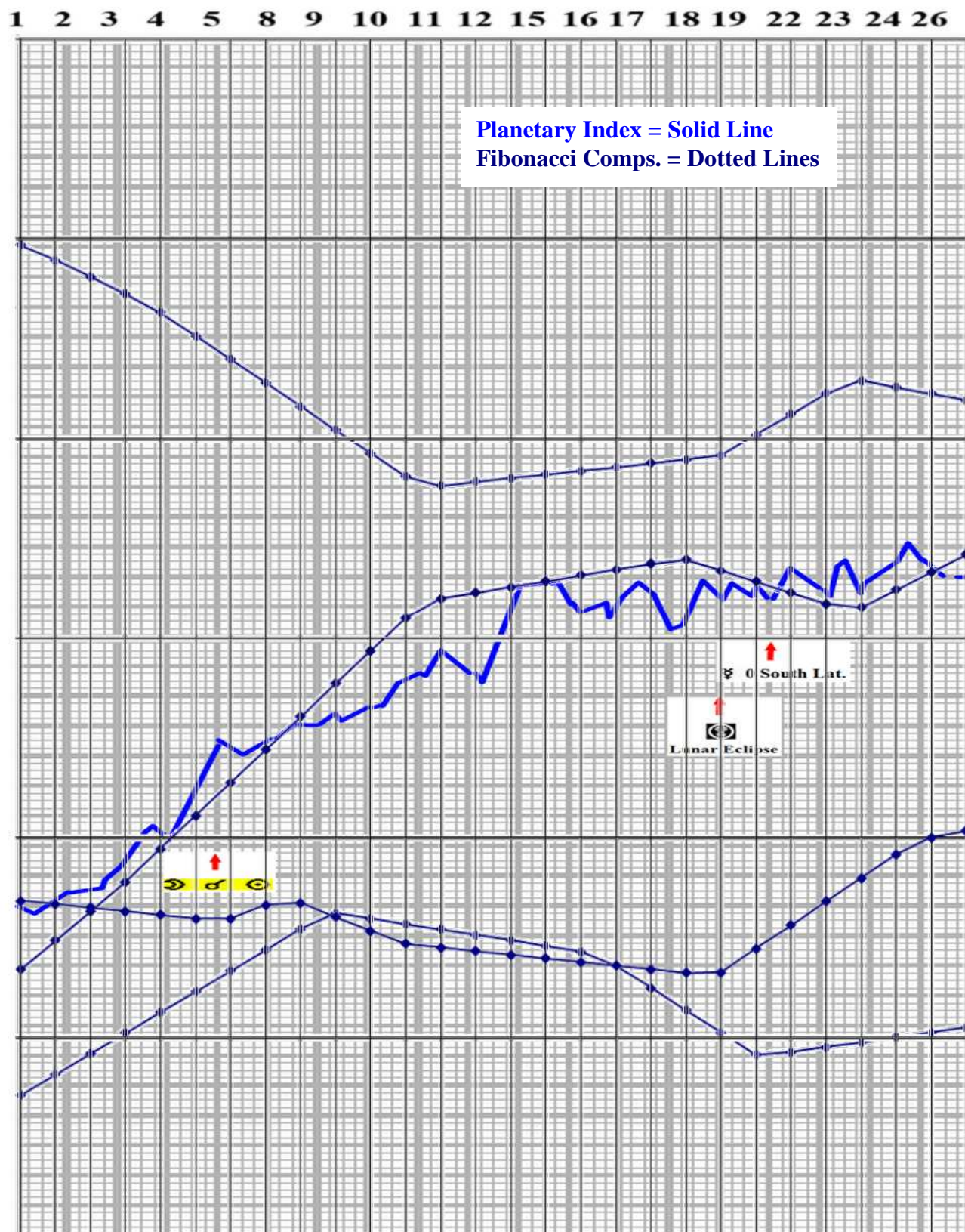
# November 2021 Planetary Index & November 2021 Fibonacci Composite Averages



**FUTURES AND OPTIONS TRADING IS NOT SUITABLE FOR ALL INVESTORS. THE RISK OF LOSS IS SUBSTANTIAL. AN INVESTOR COULD LOSE MORE THAN THE INITIAL INVESTMENT. PAST PERFORMANCE IS NOT NECESSARILY INDICATIVE OF FUTURE RESULTS.**

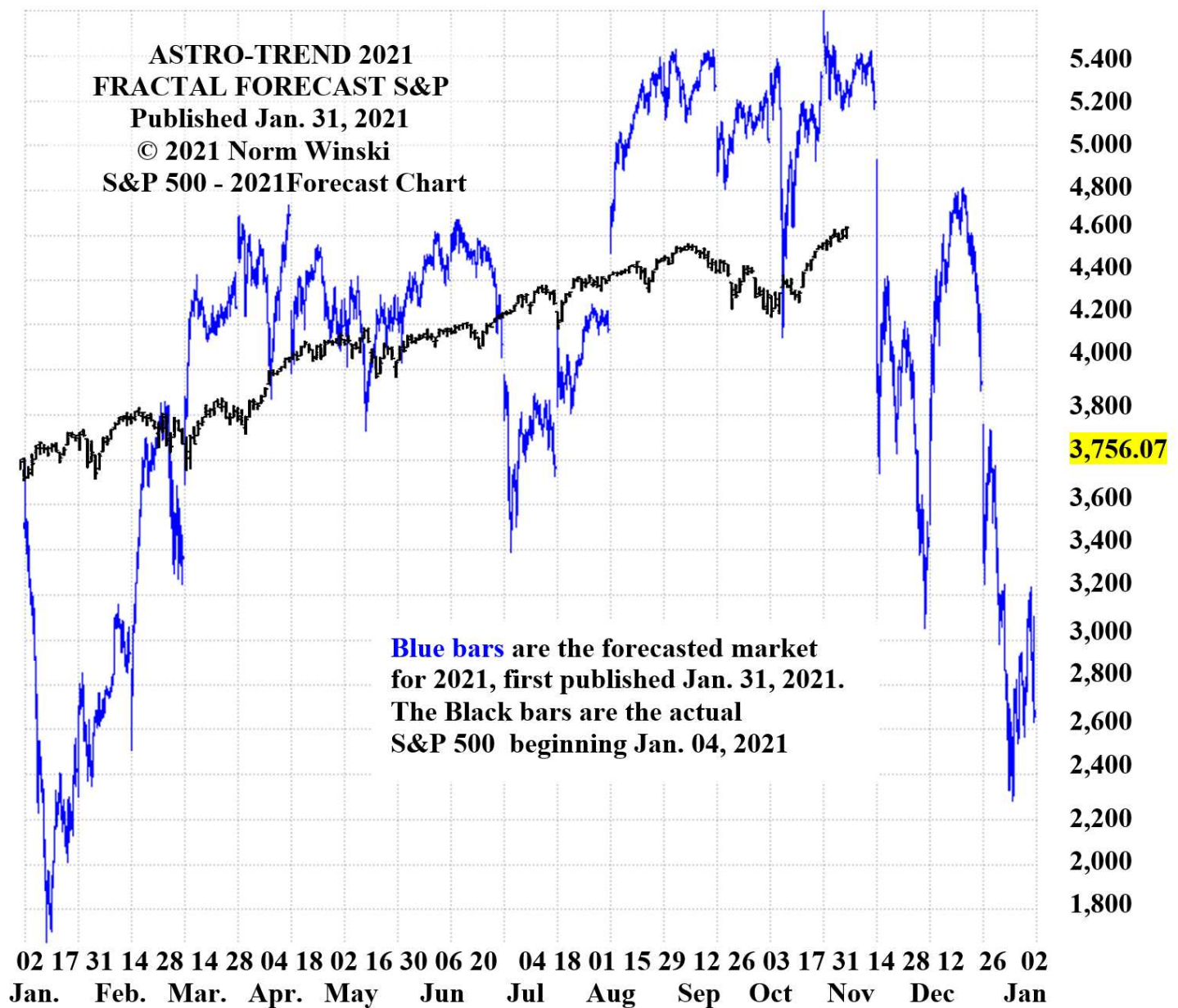


# Inverted November 2021 Planetary Index & November 2021 Fibonacci Composite Averages



**FUTURES AND OPTIONS TRADING IS NOT SUITABLE FOR ALL INVESTORS. THE RISK OF LOSS IS SUBSTANTIAL. AN INVESTOR COULD LOSE MORE THAN THE INITIAL INVESTMENT. PAST PERFORMANCE IS NOT NECESSARILY INDICATIVE OF FUTURE RESULTS.**

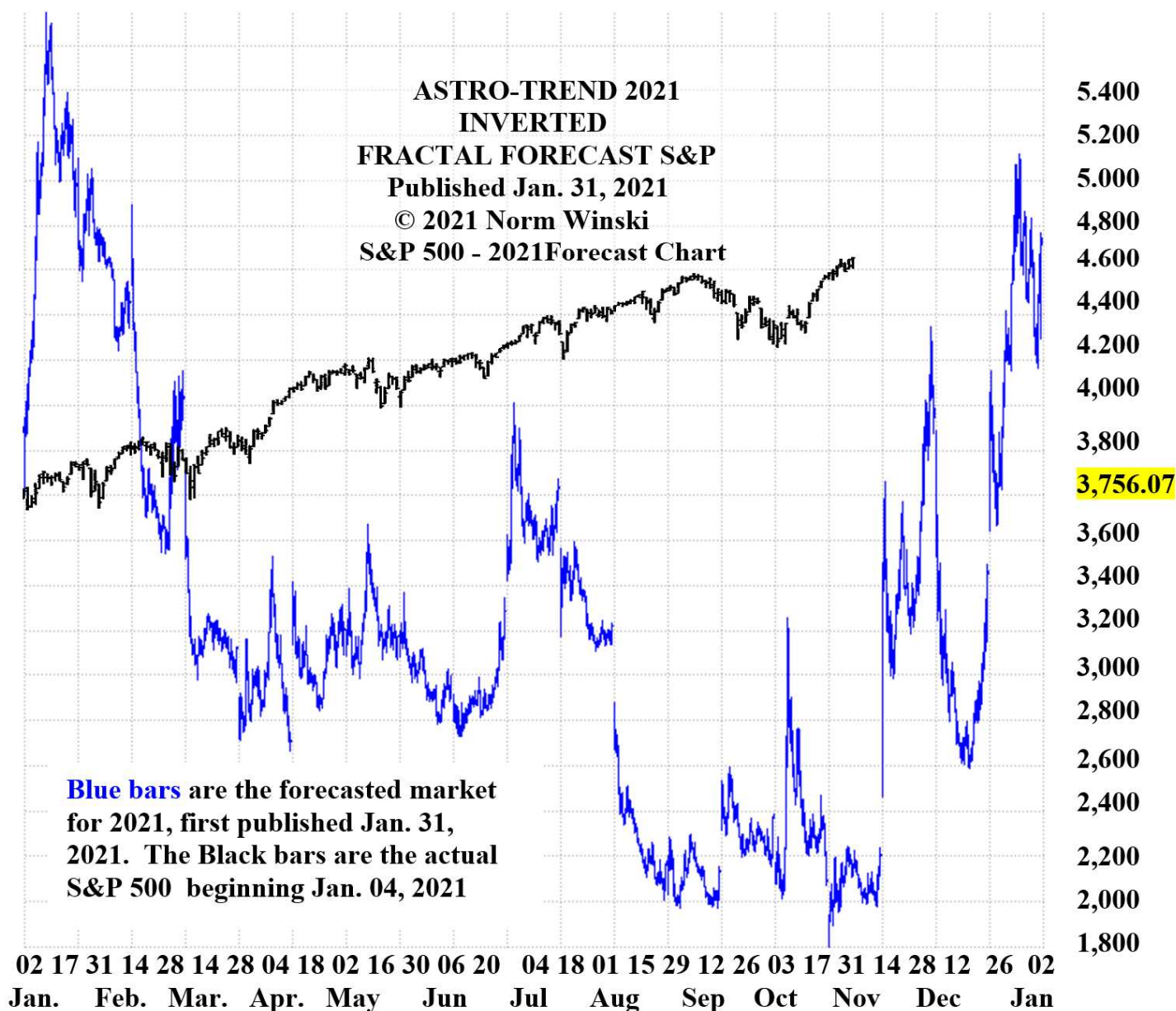
Jan. Feb. Mar. Apr. May Jun Jul Aug Sep Oct Nov Dec Jan  
 02 17 31 14 28 14 28 04 18 02 16 30 06 20 04 18 01 15 29 12 26 03 17 31 14 28 12 26 02



**FUTURES AND OPTIONS TRADING IS NOT SUITABLE FOR ALL INVESTORS. THE RISK OF LOSS IS SUBSTANTIAL. AN INVESTOR COULD LOSE MORE THAN THE INITIAL INVESTMENT. PAST PERFORMANCE IS NOT NECESSARILY INDICATIVE OF FUTURE RESULTS.**



Jan. Feb. Mar. Apr. May Jun Jul Aug Sep Oct Nov Dec Jan  
 02 17 31 14 28 14 28 04 18 02 16 30 06 20 04 18 01 15 29 12 26 03 17 31 14 28 12 26 02



**FUTURES AND OPTIONS TRADING IS NOT SUITABLE FOR ALL INVESTORS. THE RISK OF LOSS IS SUBSTANTIAL. AN INVESTOR COULD LOSE MORE THAN THE INITIAL INVESTMENT. PAST PERFORMANCE IS NOT NECESSARILY INDICATIVE OF FUTURE RESULTS.**

Jan. Feb. Mar. Apr. May Jun Jul Aug Sep Oct Nov Dec Jan  
 02 17 31 14 28 14 28 04 18 02 16 30 06 20 04 18 01 15 29 12 26 03 17 31 14 28 12 26 02

**ASTRO-TREND 2021**  
**FRACTAL FORECAST T-BONDS**  
 Published Jan. 01, 2021  
 © 2021 N. WINSKI

183-00

179-00

175-00

**172-31**

171-00

167-00

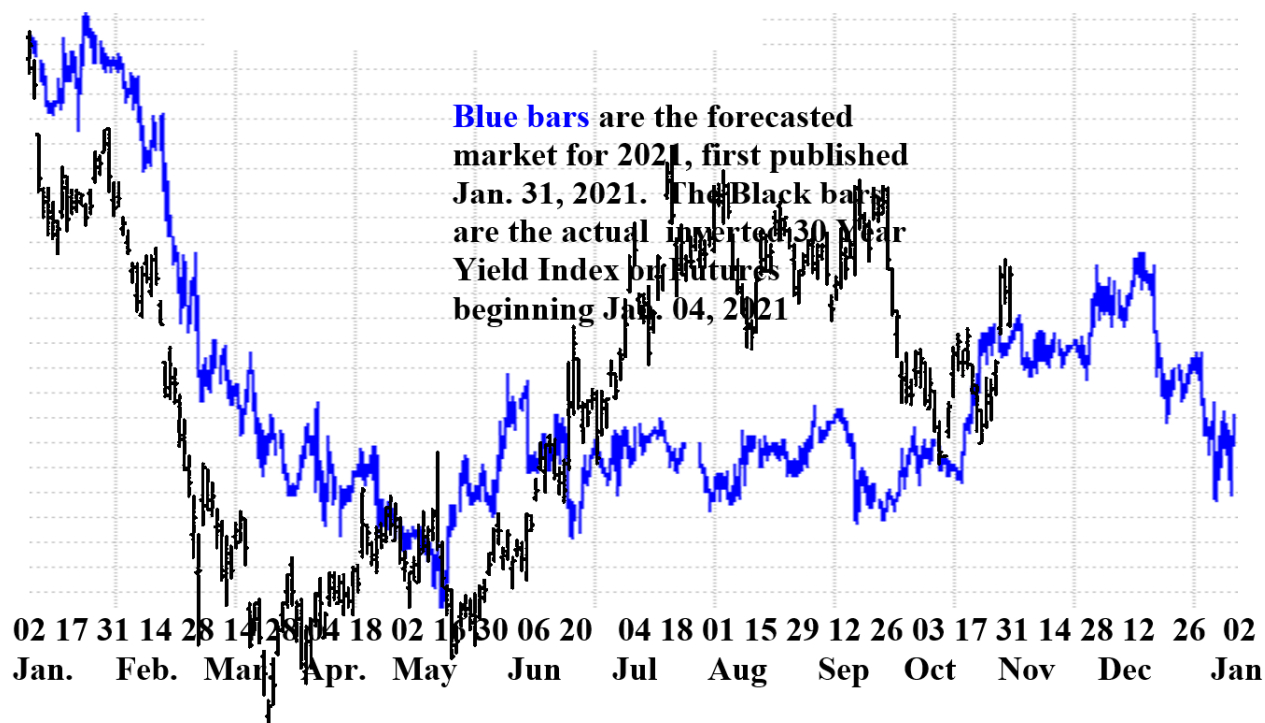
163-00

159-00

155-00

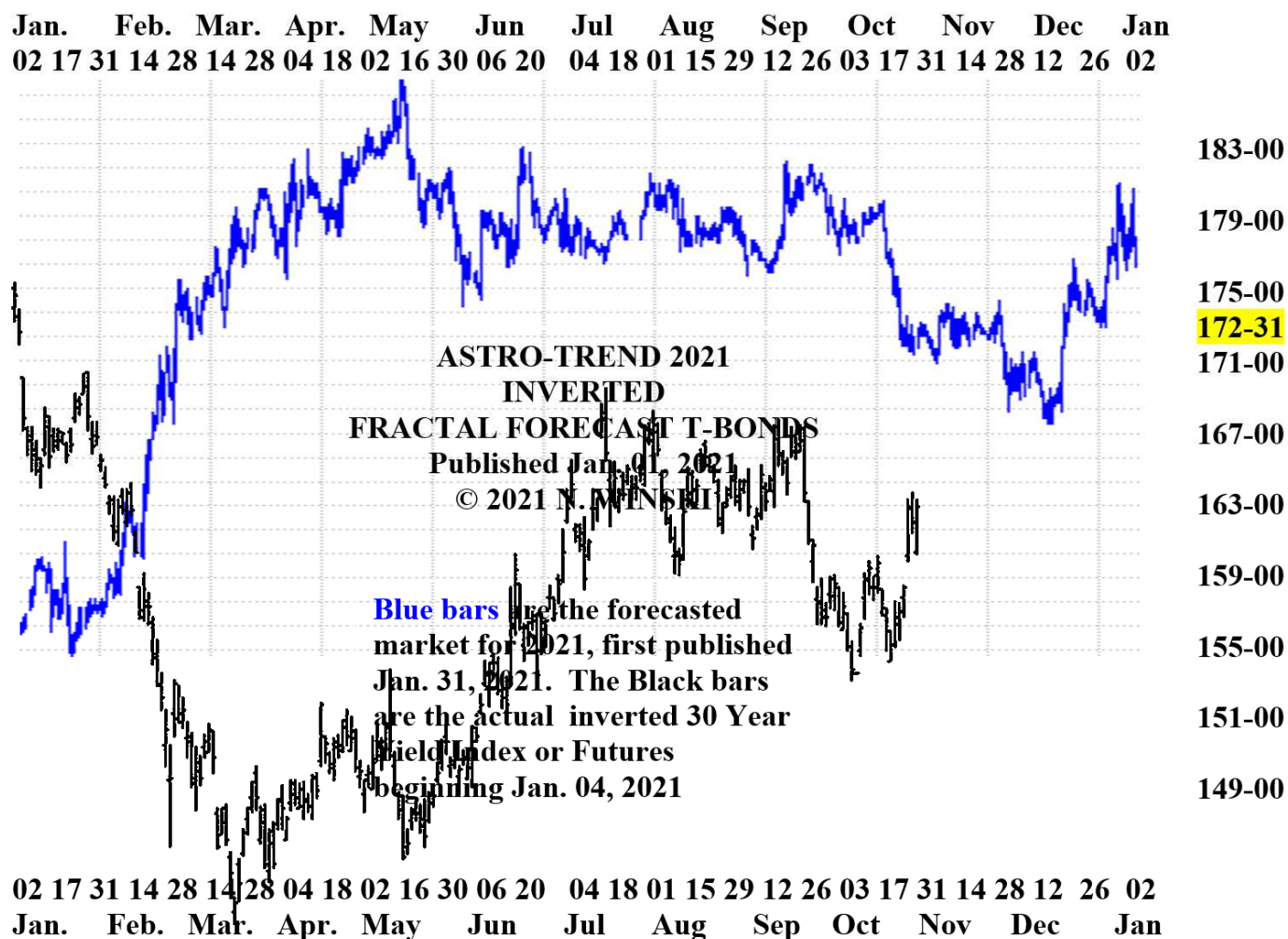
151-00

149-00



**FUTURES AND OPTIONS TRADING IS NOT SUITABLE FOR ALL INVESTORS. THE RISK OF LOSS IS SUBSTANTIAL. AN INVESTOR COULD LOSE MORE THAN THE INITIAL INVESTMENT. PAST PERFORMANCE IS NOT NECESSARILY INDICATIVE OF FUTURE RESULTS.**





**FUTURES AND OPTIONS TRADING IS NOT SUITABLE FOR ALL INVESTORS. THE RISK OF LOSS IS SUBSTANTIAL. AN INVESTOR COULD LOSE MORE THAN THE INITIAL INVESTMENT. PAST PERFORMANCE IS NOT NECESSARILY INDICATIVE OF FUTURE RESULTS.**